

Thirteen ♦ Delivery of the development

PROPOSED TIMESCALE AND PHASING

13.1 An indicative construction programme covering engineering, procurement, construction and commissioning of the Brighton and Hove wastewater treatment project has been produced to inform the environmental impact assessment and a simplified programme is shown in figure 13.1 below.

13.2 The programme includes the main treatment works site, all transfer infrastructure works and the long sea outfall at Friar's Bay. The programme has a total duration of approximately four years. A period of 87 weeks has been allowed for pre-construction activities. Construction activities would have a duration of 127 weeks and overlap with pre-construction activities by 30 weeks. Commissioning is expected to require 32 weeks with eight weeks of overlap with the construction activities.

13.3 Environmental enabling works have also been indicated as separate activities in order to demonstrate their significance to the overall programme. These activities would have a duration of 38 weeks and start 22 weeks before the start of construction.

13.4 In the detailed programme the construction of the wastewater treatment works and sludge recycling centre has been split into nine summary activities as follows:

- mobilisation (6 weeks);
- bulk earthworks (22 weeks);
- civil/building construction (65 weeks);
- process equipment installation (52 weeks);
- ancillary equipment installation (34 weeks);
- works inlet pumping station: civil/building works (20 weeks);
- works inlet pumping station: mechanical and electrical installation (20 weeks);
- works inlet pumping station: finishing works (8 weeks);
- site works and architecture (26 weeks)

13.5 Construction of the works inlet pumping station has been separated from construction of the rest of the treatment works' process units due to its inter-linkage with the infrastructure works.

13.6 The infrastructure and pumping stations programme has been developed in more detail to reflect the complex inter-connected nature of the activities. The infrastructure elements of the programme include activities that are in Brighton and Hove and thus outside the scope of this planning application. The main infrastructure activity groups in the East Sussex County Council area are:

- Saltdean East shaft (40 weeks);
- Portobello pumping station (91 weeks);
- Wastewater treatment works tunnel shaft sites (97 weeks);
- Meridian car park shaft (52 weeks);
- Friar's Bay (90 weeks).

13.7 Commissioning activities have been grouped at the end of the programme to show the various activities that would need to be coordinated as part of the commissioning process. These activities would have a duration of 32 weeks and overlap by 8 weeks with the end of the WTW & SRC construction stage.

CONSTRUCTION ENVIRONMENTAL MANAGEMENT PLAN

13.8 Southern Water is committed to applying a *Construction Environmental Management Plan* (CEMP) for the duration of the construction phase. The plan will cover the following aspects.

General site management issues:

- working hours
- site layout, appearance and lighting
- housekeeping and pest control
- security
- energy management
- site restoration
- health and safety

Environmental issues:

- public access and traffic management
- noise and vibration
- air quality
- contaminated land
- waste management
- protection of surface and groundwater resources
- landscape and visual resources
- ecology
- archaeology and built heritage
- soils and geology
- local employment opportunities

Monitoring

- site-specific control measures
- minimum requirements for an environmental action plan
- the current regulatory framework

13.9 The proposed CEMP is set out in full in appendix 2.0.2 of the Environmental Statement that accompanies Southern Water's planning application.

OPERATIONAL ENVIRONMENTAL MANAGEMENT PLAN

13.10 Similarly, Southern Water proposes to implement an Operational *Environmental Management Plan* (OEMP) to provide environmental protection once the project is built and in operation. The OEMP forms appendix 2.0.3 of the Environmental Statement, and covers the following considerations.

- implementation arrangements
- public access and traffic management
- noise and vibration
- air quality and odour management
- protection of surface and groundwater resources
- landscape
- ecology
- archaeology
- soils and geology.

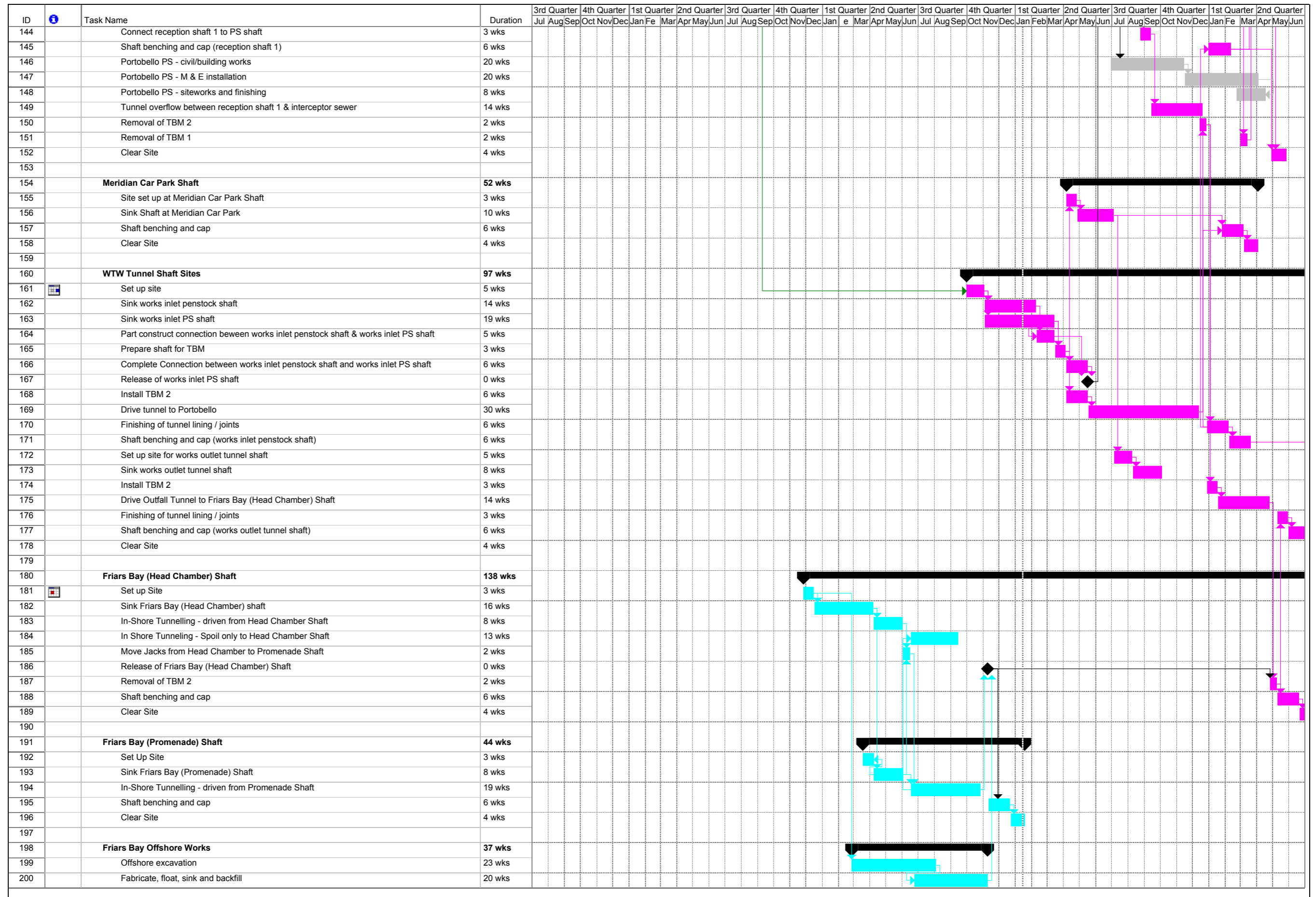


FIGURE 13.1: Indicative construction programme for the project