

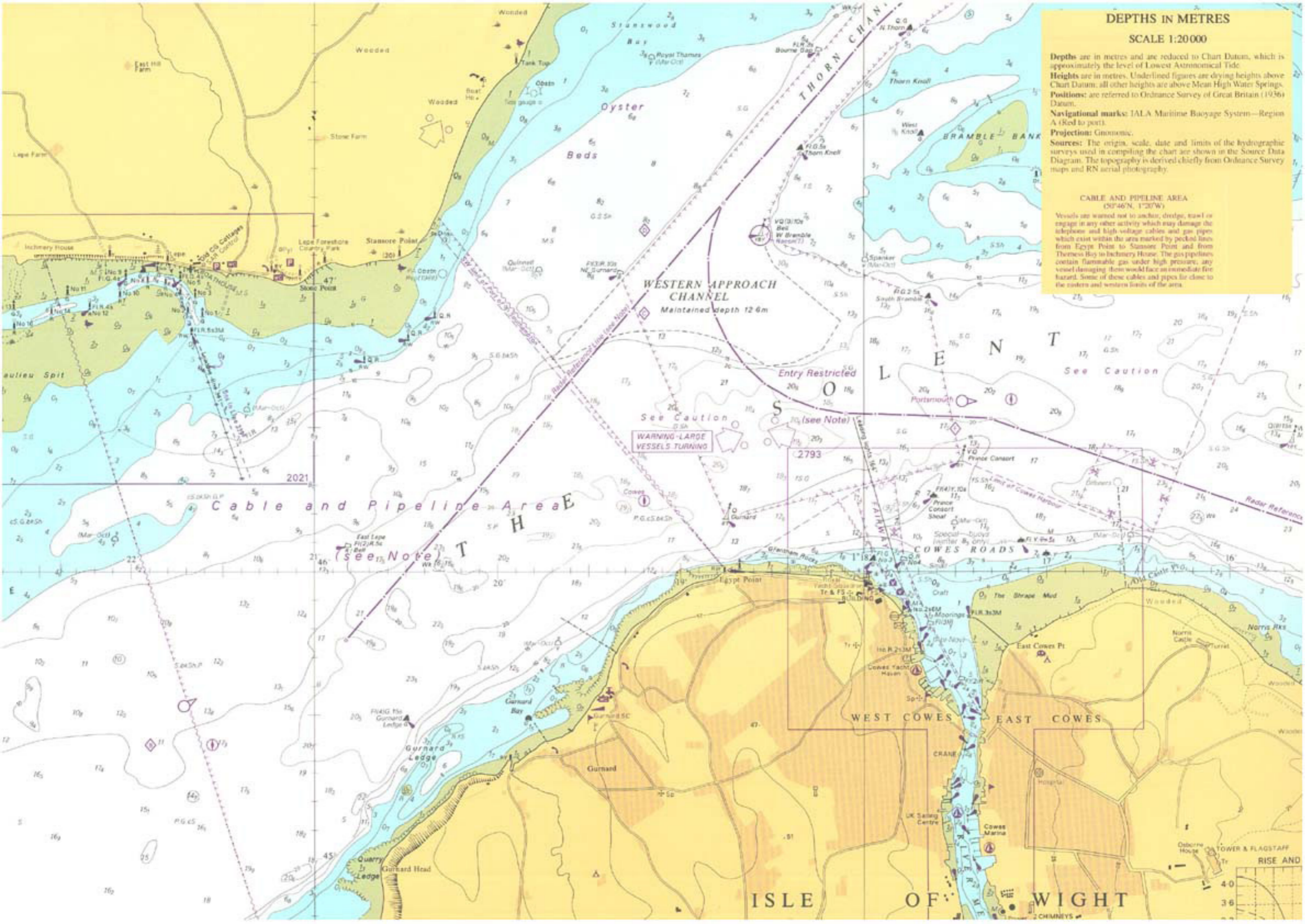
DEPTHS IN METRES

SCALE 1:20 000

Depths are in metres and are reduced to Chart Datum, which is approximately the level of Lowest Astronomical Tide.
 Heights are in metres. Underlined figures are drying heights above Chart Datum; all other heights are above Mean High Water Springs.
 Positions are referred to Ordnance Survey of Great Britain (1936) Datum.
 Navigational marks: IALA Maritime Buoyage System—Region A (Red to port).
 Projection: Gnomonic.
 Sources: The origin, scale, date and limits of the hydrographic surveys used in compiling the chart are shown in the Source Data Diagram. The topography is derived chiefly from Ordnance Survey maps and RN aerial photography.

CABLE AND PIPELINE AREA (51°46'N, 1°20'W)

Vessels are warned not to anchor, dredge, trawl or engage in any other activity which may damage the telephone and high-voltage cables and gas pipes which exist within the area marked by pecked lines from Egypt Point to Stansore Point and from Thorness Bay to Inchnary House. The gas pipelines contain flammable gas under high pressure; any vessel damaging them would face an immediate fire hazard. Some of these cables and pipes lie close to the eastern and western limits of the area.



Cable and Pipeline Area
 (see Note)

WARNING-LARGE
VESSELS TURNING

ISLE OF WIGHT

RISE AND FALL

4.0
3.6