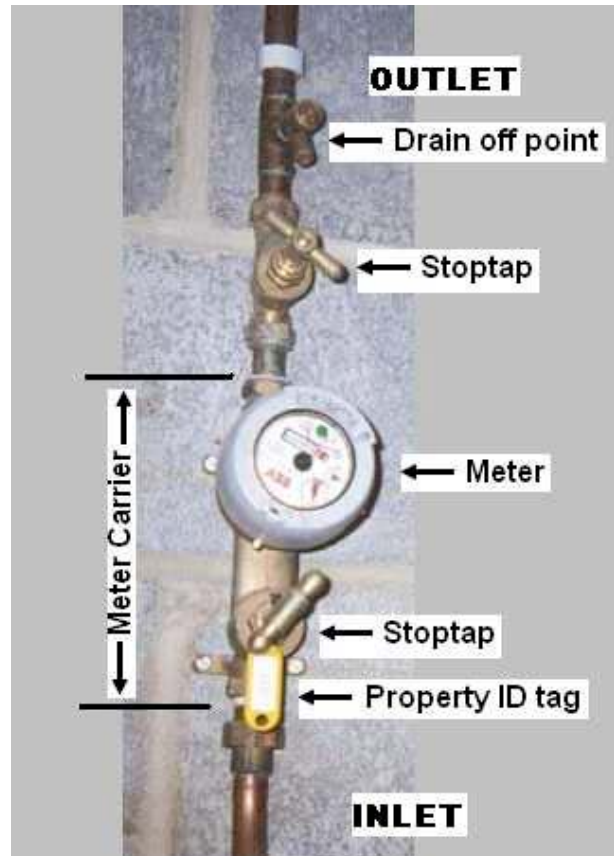


- 1 All meter and private pipework installations must satisfy Water Regulation requirements
- 2 The meters will only be installed on carriers that have WRAS approval. These meter carriers can either be supplied by Southern Water and re-charged via the job estimate, or purchased direct from an independent supplier.
- 3 The meter carrier will be of a gunmetal or similar approved material (not plastic) Complete with integral stoptap, both the inlet and outlet must have 3/4" BSP threaded ends. The meter carrier is also to have an in built non-return valve (NRV) and the stoptap must be to BS1010. The Stoptap and NRV must also have WRAS approval.
- 4 All meters once fitted must have a tag to identify each property flat number
- 5 The meter carrier must be correctly secured to a wooden backboard.
- 6 A drain cock and a stop tap are to be fitted immediately after (downstream of) the meter carrier.
- 7 Each flat will have its own meter, there will be no shared supply
- 8 The Builder/Developer must ensure that the owner of each flat is shown the location of their meter.
- 9 Access for meter maintenance and meter reading will be required 24 hours a day / 365 days a year.
- 10 Southern Water will not carry any special keys to open doors to gain entry to premises or meter cupboards. Any doors that need secure access must be fitted with coded pads and the codes provided to Southern Water. The meter cupboard(s) must not be lockable.
- 11 All future maintenance and responsibility for pipework within the grounds of the property and internal pipework within the building(s), rests with the owner(s) of the property. This includes the meter carriers, but not the meters.
- 12 The meters will remain the responsibility of Southern Water and must not be removed or tampered with by others.
- 13 Water and electrical apparatus must not be installed in close proximity or within the same cupboard.



**SINGLE METER INSTALLATION**



**METER CARRIER**