

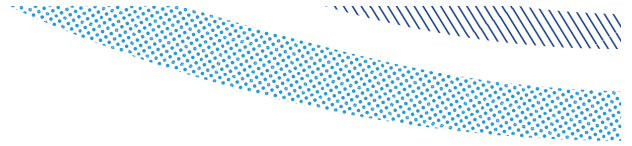


Developer Services S104 and S104/185 provisional certificate

V1.1 4th April 2019

In order to apply for a Provisional Certificate the following questions require a positive (Yes) answer:

- Is construction of the relevant drainage works proposed under the S104 or S104/185 Agreement complete?
- Have these drainage works been inspected by Southern Water during construction?
- Have the majority (over 50%) of premises served by the sewers been occupied?
- Has all highway construction, which is located over the relevant sewers, been completed (with the exception of the final surfacing)?
- Have manhole covers been either set to finished road levels or appropriate road levels?
- Have all Temporary Works and materials been removed?
- Have “as constructed drawings” been provided to Southern Water?
- These should be paper copies and for your information I include a summary sheet below listing the requirements for these drawings.
- Have draft operating instructions and maintenance manuals including “Test Certificates” been provided for any M&E Pumping Station Works?
- Has the Pumping Station (if applicable) telemetry system been installed?
- Have Emergency Call out numbers been provided in case of failure of the Pumping Station (if applicable)?
- Has a notification sign been installed at the pumping station (if applicable) with details of the call out number, for residents information?
- Has the Land Transfer documentation for the pumping station (if applicable) been prepared?
- Have the sewers been cleaned in readiness for inspection? (Jetting may be required)



Notification and Request for Provisional Certificate

Subject to satisfactory compliance with the above then:

Southern Water will carry out an internal survey, etc., and arrange final visual inspection. Test pumping station installation and telemetry system operational jointly with the Developer.

Southern Water will carry out the above inspection and issue a defects list, if Remedial Works are required, within a period of 2 months and 2 weeks from receipt of a request from the Developer.

The following questions will then require a positive (Yes) answer:

- Have all remedial works been completed?
- Has Southern Water received notification of this and been requested to carry out a further inspection?
- Has the Inspection been carried out and all remedial works signed off as satisfactory by Southern Water?
- Has Southern Water requested any further CCTV/Internal surveys?
- Have these been satisfactorily completed/supplied?

Maintenance Period and Provisional Certificate

Subject to satisfactory compliance with the above then Southern Water will issue a Provisional Certificate and the 12 Month Maintenance Period will commence.



REQUIREMENTS FOR “AS-CONSTRUCTED” DRAWINGS

SECTION 104 AGREEMENT

4 Copies of the DRAINAGE LAYOUT PLAN to include:-

- Site boundary clearly marked in green
- Clearly defined plot boundaries and buildings
- Adoptable foul sewers coloured brown with direction arrows
- Adoptable surface water sewers coloured blue with direction arrows
- As Constructed Manhole cover and invert levels - to be shown on drainage layout plan. Separate manhole schedule to be provided
- Pipe sizes
- Pipe materials
- Pipe gradients
- Road names
- North point
- House address numbers (not plot numbers)
- Private drains - private sewers & highway drains clearly marked and coloured black.

THE ORIGINAL AGREEMENT DESIGN DRAWING DETAILS ARE NOT ACCEPTABLE FOR AS CONSTRUCTED PURPOSES. THEY SHOULD BE RE-SURVEYED AND THE AS CONSTRUCTED MANHOLE COVER AND INVERT LEVELS ARE TO BE TO O.S. DATUM.

IN THE EVENT THE DRAWINGS DO NOT COMPLY WITH THE ABOVE AN ADDITIONAL CHECKING FEE MAY BE CHARGED.



REQUIREMENTS FOR “AS-CONSTRUCTED” DRAWINGS

SECTION 104/185 AGREEMENT

4 Copies of the DRAINAGE LAYOUT PLAN to include:-

- Site boundary clearly marked in **GREEN**
- Clearly defined plot boundaries, buildings and floor levels
- The abandoned sewer coloured **RED** and the diverted sewer coloured **BLUE**
- Pipe sizes, materials and gradients
- Manhole **cover and invert levels** (to Ordnance Survey Datum i.e. metres above OD)
- Private drains/sewers/highway drains clearly marked and coloured black.