

# Meter Specification 2019-20



from  
**Southern  
Water** 



# **ARAD**

# **Meter Specification**

| METER TYPE  | METER SPECIFICATION                           |                             |
|---|---|-----------------------------|
| <b>15mm 3G Concentric Meter</b><br><b>AMR Transmission –</b><br><b>Current Reading, 10 End of</b><br><b>Month Historical Reads,</b><br><b>alarms etc. plus 4000 point</b><br><b>data logger</b> | <b>Meter Thread Size</b>                      | G1½                         |
|   | <b>MID Compliant</b>                          | Yes                         |
|   | <b>Register</b>                               | IP68                        |
|   | <b>Maximum Working Pressure</b>               | 16 bar                      |
|   | <b>Maximum Working Temperature</b>            | 50°C                        |
|   | <b>B – Width (mm)</b>                         | 103                         |
|   | <b>H – Height (mm)</b>                        | 141                         |
|   | <b>Weight (kg)</b>                            | 0.66                        |
|   | <b>Maximum Flow Rate (m³/h) – Q4</b>          | 2                           |
|   | <b>Nominal Flow Rate (m³/h) – Q3</b>          | 1.6                         |
|   | <b>Transitional Flow Rate (l/h) – Q2</b>      | 8                           |
|   | <b>Minimum Flow Rate (l/h) – Q1</b>           | 5                           |
|   | <b>R Q3/Q1</b>                                | 315                         |
|   | <b>Number of Maximum Index Dials</b>          | 5                           |
|   | <b>Meter Material</b>                         | Highly reinforced composite |
|   | <b>Maximum Register Capacity (m³)</b>         | 99,999                      |
|   | <b>Minimum Register Capacity (l)</b>          | 0.02                        |
| <b>Sensitivity (l/h)</b>  | 1   |                             |
| <b>WRAS approved for Contaminated Land</b>  | Yes   |                             |
| <b>Output Options – Optical Encoder</b>   | Standard Specification –<br>1 Pulse per Litre |                             |



| METER TYPE   | METER SPECIFICATION                           |                             |
|--|---|-----------------------------|
| <b>20mm 3G Concentric Meter<br/>           AMR Transmission –<br/>           Current Reading, 10 End of<br/>           Month Historical Reads,<br/>           alarms etc. plus 4000 point<br/>           data logger</b> | <b>Meter Thread Size</b>                      | G1½                         |
|  | <b>MID Compliant</b>                          | Yes                         |
|  | <b>Register</b>                               | IP68                        |
|  | <b>Maximum Working Pressure</b>               | 16 bar                      |
|  | <b>Maximum Working Temperature</b>            | 50°C                        |
|  | <b>B – Width (mm)</b>                         | 103                         |
|  | <b>H – Height (mm)</b>                        | 141                         |
|  | <b>Weight (kg)</b>                            | 0.66                        |
|  | <b>Maximum Flow Rate (m³/h) – Q4</b>          | 3.125                       |
|  | <b>Nominal Flow Rate (m³/h) – Q3</b>          | 2.5                         |
|  | <b>Transitional Flow Rate (l/h) – Q2</b>      | 10                          |
|  | <b>Minimum Flow Rate (l/h) – Q1</b>           | 6.25                        |
|  | <b>R Q3/Q1</b>                                | 400                         |
|  | <b>Number of Maximum Index Dials</b>          | 5                           |
|  | <b>Meter Material</b>                         | Highly reinforced composite |
|  | <b>Maximum Register Capacity (m³)</b>         | 99,999                      |
|  | <b>Minimum Register Capacity (l)</b>          | 0.02                        |
|  | <b>Sensitivity (l/h)</b>                      | 1                           |
| <b>WRAS approved for Contaminated Land</b>   | Yes   |                             |
| <b>Output Options – Optical Encoder</b>  | Standard Specification –<br>1 Pulse per Litre |                             |



| METER TYPE  | METER SPECIFICATION                           |                             |
|---|---|-----------------------------|
| <b>15mm 3G Inline Meter</b><br><b>AMR Transmission –</b><br><b>Current Reading, 10 End of</b><br><b>Month Historical Reads,</b><br><b>alarms etc. plus 4000 point</b><br><b>data logger</b> | <b>Meter Thread Size</b>                      | G¾                          |
|   | <b>MID Compliant</b>                          | Yes                         |
|   | <b>Register</b>                               | IP68                        |
|   | <b>Maximum Working Pressure</b>               | 16 bar                      |
|   | <b>Maximum Working Temperature</b>            | 50°C                        |
|   | <b>B – Width (mm)</b>                         | 103                         |
|   | <b>H – Height (mm)</b>                        | 151                         |
|   | <b>Weight (kg)</b>                            | 0.66                        |
|   | <b>Maximum Flow Rate (m³/h) – Q4</b>          | 2                           |
|   | <b>Nominal Flow Rate (m³/h) – Q3</b>          | 1.6                         |
|   | <b>Transitional Flow Rate (l/h) – Q2</b>      | 8                           |
|   | <b>Minimum Flow Rate (l/h) – Q1</b>           | 5                           |
|   | <b>R Q3/Q1</b>                                | 315                         |
|   | <b>Number of Maximum Index Dials</b>          | 5                           |
|   | <b>Meter Material</b>                         | Highly reinforced composite |
|   | <b>Maximum Register Capacity (m³)</b>         | 99,999                      |
|   | <b>Minimum Register Capacity (l)</b>          | 0.02                        |
| <b>Sensitivity (l/h)</b>  | 1   |                             |
| <b>WRAS approved for Contaminated Land</b>  | Yes   |                             |
| <b>Output Options – Optical Encoder</b>   | Standard Specification –<br>1 Pulse per Litre |                             |



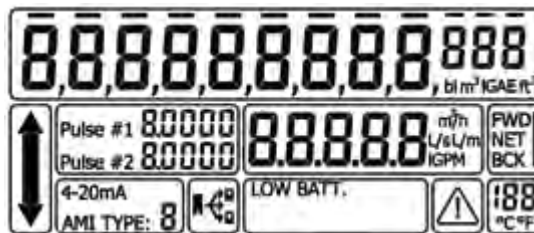
| METER TYPE                           | METER SPECIFICATION                           |        |
|--------------------------------------|---|--------|
| <b>25mm Inline Meter</b>             | <b>Meter Thread Size</b>                      | G1¼    |
|                                      | <b>MID Compliant</b>                          | Yes    |
|                                      | <b>Register</b>                               | IP68   |
|                                      | <b>Maximum Working Pressure</b>               | 16 bar |
|                                      | <b>Maximum Working Temperature</b>            | 50°C   |
|                                      | <b>B – Width (mm)</b>                         | 117    |
|                                      | <b>H – Height (mm)</b>                        | 133    |
|                                      | <b>Weight (kg)</b>                            | 3.21   |
|                                      | <b>Maximum Flow Rate (m³/h) – Q4</b>          | 7      |
|                                      | <b>Nominal Flow Rate (m³/h) – Q3</b>          | 3.5    |
|                                      | <b>Transitional Flow Rate (l/h) – Q2</b>      | 40.25  |
|                                      | <b>Minimum Flow Rate (l/h) – Q1</b>           | 26.25  |
|                                      | <b>R Q3/Q1</b>                                | 130    |
|                                      | <b>Number of Maximum Index Dials</b>          | 5      |
|                                      | <b>Meter Material</b>                         | Brass  |
|                                      | <b>Maximum Register Capacity (m³)</b>         | 99,999 |
| <b>Minimum Register Capacity (l)</b> | 0.02  |        |
| <b>Output Options – Tagus Sensor</b> | Standard Specification –<br>1 Pulse per Litre |        |



| METER TYPE                     | METER SPECIFICATION                               |                |
|--------------------------------|---|----------------|
| <b>40mm MS Meter</b>           | Meter Thread Size                                 | G2             |
|                                | MID Compliant                                     | Yes            |
|                                | Register  | IP68           |
|                                | Maximum Working Pressure                          | 10 bar         |
|                                | Maximum Working Temperature                       | 0.1 up to 50°C |
|                                | B – Width (mm)                                    | 125            |
|                                | H – Height (mm)                                   | 140            |
|                                | Weight (kg)                                       | 4.1            |
|                                | Maximum Flow Rate (m <sup>3</sup> /h) – Q4        | 20             |
|                                | Nominal Flow Rate (m <sup>3</sup> /h) – Q3        | 16             |
|                                | Transitional Flow Rate (l/h) – Q2                 | 0.205          |
|                                | Minimum Flow Rate (l/h) – Q1                      | 0.13           |
|                                | R Q3/Q1   | 125            |
|                                | Number of Maximum Index Dials                     | 6              |
|                                | Meter Material                                    | Brass          |
|                                | Maximum Register Capacity (m <sup>3</sup> )       | 999,999        |
| Minimum Register Capacity (l)  | 0.5   |                |
| Output Options – WST/MS Sensor | Standard Specification –<br>1 Pulse per 10 Litres |                |

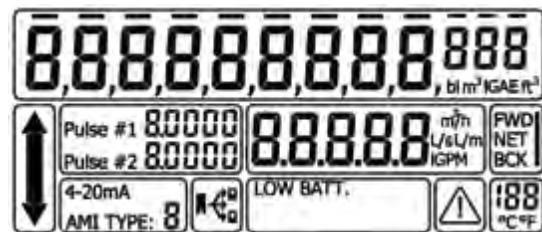


| METER TYPE   | METER SPECIFICATION  |   |
|--|--|---|
| <b>40mm Octave Meter</b>   | Meter Thread Size  | G2  |
|  | MID Compliant  | Yes   |
|  | Register   | IP68  |
|  | Maximum Working Pressure   | 16 bar                                      |
|  | Maximum Working Temperature  | 0.1 up to 50°C                              |
|  | L – Length w/o Couplings (mm)  | 300   |
|  | B – Width (mm)   | 113   |
|  | H – Height (mm)  | 155   |
|  | h – Height (mm)  | 35  |
|  | Weight (kg)  | 1.4   |
|  | Maximum Flow Rate (m <sup>3</sup> /h) – Q4   | 50  |
|  | Nominal Flow Rate (m <sup>3</sup> /h) – Q3   | 40  |
|  | Transitional Flow Rate (l/h) – Q2  | 0.256                                       |
|  | Minimum Flow Rate (l/h) – Q1   | 0.16  |
|  | R Q3/Q1  | 250   |
|  | Display Units  | Multi line 9 digit LC Display               |
|  | Water Temperature Display °C   | (Flow rate & volume units are programmable) |
|  | Meter Material   | Highly reinforced composite                 |
|  | Maximum Register Capacity (m <sup>3</sup> )  | 999,999,999                                 |
|  | Minimum Register Capacity (l)  | 2   |
| Sensitivity (l/h)  | 25   |   |
| Output Options - Analog Output, Digital (pulse) Output, Dry Contact Output, Encoder Output, Modbus Protocol Output | SW Standard Specification – Double Digital Pulsed Output 10 Litres Forward and Reverse |   |

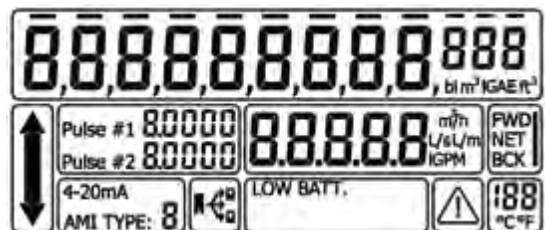




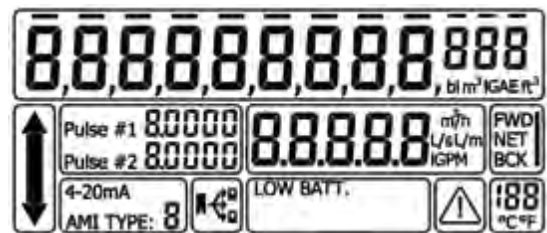
| METER TYPE        | METER SPECIFICATION  |  |
|-------------------|--|--|
| 50mm Octave Meter | MID Compliant  | Yes  |
|                   | Register   | IP68   |
|                   | Maximum Working Pressure   | 16 bar   |
|                   | Maximum Working Temperature  | 0.1 up to 50°C   |
|                   | L – Length w/o Couplings (mm)  | 200  |
|                   | B – Width (mm)   | 165  |
|                   | H – Height (mm)  | 194  |
|                   | h – Height (mm)  | 40   |
|                   | Weight (kg)  | 9  |
|                   | Maximum Flow Rate (m <sup>3</sup> /h) – Q4   | 50   |
|                   | Nominal Flow Rate (m <sup>3</sup> /h) – Q3   | 40   |
|                   | Transitional Flow Rate (l/h) – Q2  | 0.125  |
|                   | Minimum Flow Rate (l/h) – Q1   | 0.080  |
|                   | R Q3/Q1  | 500  |
|                   | Display Units<br>Water Temperature Display °C  | Multi line 9 digit LC Display<br>(Flow rate & volume units are programmable)                 |
|                   | Meter Material   | Cast Iron  |
|                   | Maximum Register Capacity (m <sup>3</sup> )  | 999,999,999  |
|                   | Minimum Register Capacity (l)  | 2  |
|                   | Sensitivity (l/h)  | 25   |
|                   | Output Options - Analog Output, Digital (pulse) Output, Dry Contact Output, Encoder Output, Modbus Protocol Output | SW Standard Specification –<br>Double Digital Pulsed Output<br>10 Litres Forward and Reverse |



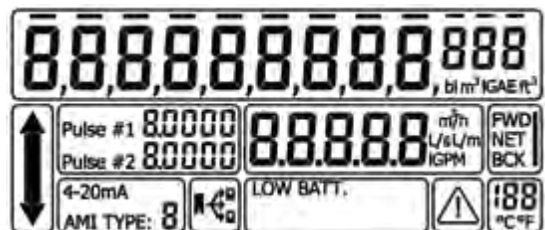
| METER TYPE  | METER SPECIFICATION  |  |
|---|--|--|
| <b>65mm Octave Meter<br/>(Non Stock Item)</b>   | <b>MID Compliant</b>   | Yes  |
|   | <b>Register</b>  | IP68   |
|   | <b>Maximum Working Pressure</b>  | 16 bar   |
|   | <b>Maximum Working Temperature</b>   | 0.1 up to 50°C   |
|   | <b>L – Length w/o Couplings (mm)</b>   | 200  |
|   | <b>B – Width (mm)</b>  | 185  |
|   | <b>H – Height (mm)</b>   | 210  |
|   | <b>h – Height (mm)</b>   | 90   |
|   | <b>Weight (kg)</b>   | 11.5   |
|   | <b>Maximum Flow Rate (m<sup>3</sup>/h) – Q4</b>  | 50   |
|   | <b>Nominal Flow Rate (m<sup>3</sup>/h) – Q3</b>  | 40   |
|   | <b>Transitional Flow Rate (l/h) – Q2</b>   | 0.125  |
|   | <b>Minimum Flow Rate (l/h) – Q1</b>  | 0.080  |
|   | <b>R Q3/Q1</b>   | 500  |
|   | <b>Display Units</b><br><b>Water Temperature Display °C</b>                                  | Multi line 9 digit LC Display<br>(Flow rate & volume units are programmable) |
|   | <b>Meter Material</b>  | Cast Iron  |
|   | <b>Maximum Register Capacity (m<sup>3</sup>)</b>   | 999,999,999  |
|   | <b>Minimum Register Capacity (l)</b>   | 2  |
| <b>Sensitivity (l/h)</b>  | 25   |  |
| <b>Output Options - Analog Output, Digital (pulse) Output, Dry Contact Output, Encoder Output, Modbus Protocol Output</b> | SW Standard Specification –<br>Double Digital Pulsed Output<br>10 Litres Forward and Reverse |  |



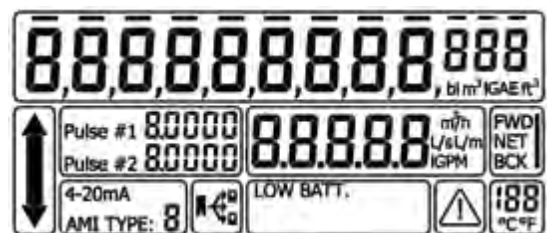
| METER TYPE  | METER SPECIFICATION  |  |
|---|--|--|
| <b>80mm Octave Meter</b>  | <b>MID Compliant</b>   | Yes  |
|   | <b>Register</b>  | IP68   |
|   | <b>Maximum Working Pressure</b>  | 16 bar   |
|   | <b>Maximum Working Temperature</b>   | 0.1 up to 50°C   |
|   | <b>L – Length w/o Couplings (mm)</b>   | 225  |
|   | <b>B – Width (mm)</b>  | 200  |
|   | <b>H – Height (mm)</b>   | 210  |
|   | <b>h – Height (mm)</b>   | 90   |
|   | <b>Weight (kg)</b>   | 13   |
|   | <b>Maximum Flow Rate (m<sup>3</sup>/h) – Q4</b>  | 80   |
|   | <b>Nominal Flow Rate (m<sup>3</sup>/h) – Q3</b>  | 63   |
|   | <b>Transitional Flow Rate (l/h) – Q2</b>   | 0.200  |
|   | <b>Minimum Flow Rate (l/h) – Q1</b>  | 0.125  |
|   | <b>R Q3/Q1</b>   | 500  |
|   | <b>Display Units</b><br><b>Water Temperature Display °C</b>                                  | Multi line 9 digit LC Display<br>(Flow rate & volume units are programmable) |
|   | <b>Meter Material</b>  | Cast Iron  |
|   | <b>Maximum Register Capacity (m<sup>3</sup>)</b>   | 999,999,999  |
|   | <b>Minimum Register Capacity (l)</b>   | 2  |
| <b>Sensitivity (l/h)</b>  | 25   |  |
| <b>Output Options - Analog Output, Digital (pulse) Output, Dry Contact Output, Encoder Output, Modbus Protocol Output</b> | SW Standard Specification –<br>Double Digital Pulsed Output<br>10 Litres Forward and Reverse |  |



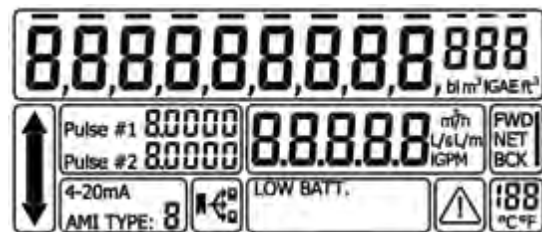
| METER TYPE  | METER SPECIFICATION  |  |
|---|--|--|
| <b>100mm Octave Meter</b>   | <b>MID Compliant</b>   | Yes  |
|   | <b>Register</b>  | IP68   |
|   | <b>Maximum Working Pressure</b>  | 16 bar   |
|   | <b>Maximum Working Temperature</b>   | 0.1 up to 50°C   |
|   | <b>L – Length w/o Couplings (mm)</b>   | 250  |
|   | <b>B – Width (mm)</b>  | 220  |
|   | <b>H – Height (mm)</b>   | 223  |
|   | <b>h – Height (mm)</b>   | 103  |
|   | <b>Weight (kg)</b>   | 15   |
|   | <b>Maximum Flow Rate (m³/h) – Q4</b>   | 125  |
|   | <b>Nominal Flow Rate (m³/h) – Q3</b>   | 100  |
|   | <b>Transitional Flow Rate (l/h) – Q2</b>   | 0.320  |
|   | <b>Minimum Flow Rate (l/h) – Q1</b>  | 0.200  |
|   | <b>R Q3/Q1</b>   | 500  |
|   | <b>Display Units</b><br><b>Water Temperature Display °C</b>                                  | Multi line 9 digit LC Display<br>(Flow rate & volume units are programmable) |
|   | <b>Meter Material</b>  | Cast Iron  |
|   | <b>Maximum Register Capacity (m³)</b>  | 999,999,999  |
| <b>Minimum Register Capacity (l)</b>  | 2  |  |
| <b>Sensitivity (l/h)</b>  | 25   |  |
| <b>Output Options - Analog Output, Digital (pulse) Output, Dry Contact Output, Encoder Output, Modbus Protocol Output</b> | SW Standard Specification –<br>Double Digital Pulsed Output<br>10 Litres Forward and Reverse |  |



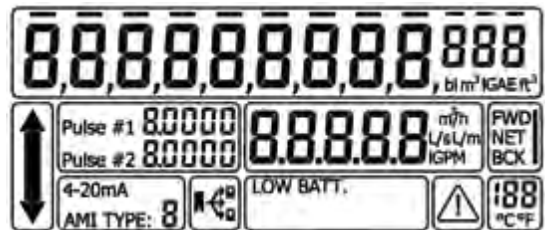
| METER TYPE  | METER SPECIFICATION  |  |
|---|--|--|
| <b>150mm Octave Meter</b>   | <b>MID Compliant</b>   | Yes  |
|   | <b>Register</b>  | IP68   |
|   | <b>Maximum Working Pressure</b>  | 16 bar   |
|   | <b>Maximum Working Temperature</b>   | 0.1 up to 50°C   |
|   | <b>L – Length w/o Couplings (mm)</b>   | 300  |
|   | <b>B – Width (mm)</b>  | 285  |
|   | <b>H – Height (mm)</b>   | 282  |
|   | <b>h – Height (mm)</b>   | 140  |
|   | <b>Weight (kg)</b>   | 32   |
|   | <b>Maximum Flow Rate (m<sup>3</sup>/h) – Q4</b>  | 313  |
|   | <b>Nominal Flow Rate (m<sup>3</sup>/h) – Q3</b>  | 250  |
|   | <b>Transitional Flow Rate (l/h) – Q2</b>   | 0.800  |
|   | <b>Minimum Flow Rate (l/h) – Q1</b>  | 0.500  |
|   | <b>R Q3/Q1</b>   | 500  |
|   | <b>Display Units</b><br><b>Water Temperature Display °C</b>                                  | Multi line 9 digit LC Display<br>(Flow rate & volume units are programmable) |
|   | <b>Meter Material</b>  | Cast Iron  |
|   | <b>Maximum Register Capacity (m<sup>3</sup>)</b>   | 999,999,999  |
|   | <b>Minimum Register Capacity (l)</b>   | 2  |
| <b>Sensitivity (l/h)</b>  | 200  |  |
| <b>Output Options - Analog Output, Digital (pulse) Output, Dry Contact Output, Encoder Output, Modbus Protocol Output</b> | SW Standard Specification –<br>Double Digital Pulsed Output<br>10 Litres Forward and Reverse |  |



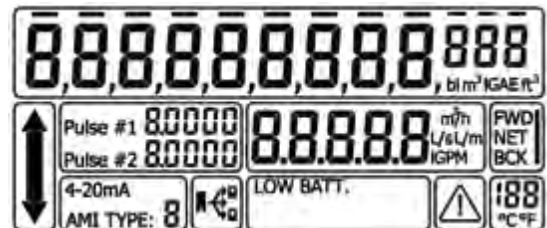
| METER TYPE  | METER SPECIFICATION  |  |
|---|--|--|
| <b>200mm Octave Meter</b>   | <b>MID Compliant</b>   | Yes  |
|   | <b>Register</b>  | IP68   |
|   | <b>Maximum Working Pressure</b>  | 16 bar   |
|   | <b>Maximum Working Temperature</b>   | 0.1 up to 50°C   |
|   | <b>L – Length w/o Couplings (mm)</b>   | 350  |
|   | <b>B – Width (mm)</b>  | 340  |
|   | <b>H – Height (mm)</b>   | 332  |
|   | <b>h – Height (mm)</b>   | 165  |
|   | <b>Weight (kg)</b>   | 45   |
|   | <b>Maximum Flow Rate (m³/h) – Q4</b>   | 500  |
|   | <b>Nominal Flow Rate (m³/h) – Q3</b>   | 400  |
|   | <b>Transitional Flow Rate (l/h) – Q2</b>   | 1.280  |
|   | <b>Minimum Flow Rate (l/h) – Q1</b>  | 0.800  |
|   | <b>R Q3/Q1</b>   | 500  |
|   | <b>Display Units</b><br><b>Water Temperature Display °C</b>                                  | Multi line 9 digit LC Display<br>(Flow rate & volume units are programmable) |
|   | <b>Meter Material</b>  | Cast Iron  |
|   | <b>Maximum Register Capacity (m³)</b>  | 999,999,999  |
|   | <b>Minimum Register Capacity (l)</b>   | 2  |
|   | <b>Sensitivity (l/h)</b>   | 200  |
| <b>Output Options - Analog Output, Digital (pulse) Output, Dry Contact Output, Encoder Output, Modbus Protocol Output</b> | SW Standard Specification –<br>Double Digital Pulsed Output<br>10 Litres Forward and Reverse |  |



| METER TYPE                | METER SPECIFICATION   |  |
|---------------------------|---|--|
| <b>250mm Octave Meter</b> | <b>MID Compliant</b>  | Yes  |
|                           | <b>Register</b>   | IP68   |
|                           | <b>Maximum Working Pressure</b>   | 16 bar   |
|                           | <b>Maximum Working Temperature</b>  | 0.1 up to 50°C   |
|                           | <b>L – Length w/o Couplings (mm)</b>  | 449  |
|                           | <b>B – Width (mm)</b>   | 406  |
|                           | <b>H – Height (mm)</b>  | 383  |
|                           | <b>h – Height (mm)</b>  | 203  |
|                           | <b>Weight (kg)</b>  | 68   |
|                           | <b>Maximum Flow Rate (m<sup>3</sup>/h) – Q4</b>   | 1250   |
|                           | <b>Nominal Flow Rate (m<sup>3</sup>/h) – Q3</b>   | 1000   |
|                           | <b>Transitional Flow Rate (l/h) – Q2</b>  | 3.2  |
|                           | <b>Minimum Flow Rate (l/h) – Q1</b>   | 2  |
|                           | <b>R Q3/Q1</b>  | 500  |
|                           | <b>Display Units</b><br><b>Water Temperature Display °C</b>   | Multi line 9 digit LC Display<br>(Flow rate & volume units are programmable)                 |
|                           | <b>Meter Material</b>   | Cast Iron  |
|                           | <b>Maximum Register Capacity (m<sup>3</sup>)</b>  | 999,999,999  |
|                           | <b>Minimum Register Capacity (l)</b>  | 5  |
|                           | <b>Sensitivity (l/h)</b>  | 500  |
|                           | <b>Output Options - Analog Output, Digital (pulse) Output, Dry Contact Output, Encoder Output, Modbus Protocol Output</b> | SW Standard Specification –<br>Double Digital Pulsed Output<br>10 Litres Forward and Reverse |



| METER TYPE   | METER SPECIFICATION  |  |
|--|--|--|
| <b>300mm Octave Meter</b>  | MID Compliant  | Yes  |
|  | Register   | IP68   |
|  | Maximum Working Pressure   | 16 bar   |
|  | Maximum Working Temperature  | 0.1 up to 50°C   |
|  | L – Length w/o Couplings (mm)  | 499  |
|  | B – Width (mm)   | 489  |
|  | H – Height (mm)  | 456  |
|  | h – Height (mm)  | 245  |
|  | Weight (kg)  | 96   |
|  | Maximum Flow Rate (m <sup>3</sup> /h) – Q4   | 1250   |
|  | Nominal Flow Rate (m <sup>3</sup> /h) – Q3   | 1000   |
|  | Transitional Flow Rate (l/h) – Q2  | 3.2  |
|  | Minimum Flow Rate (l/h) – Q1   | 2  |
|  | R Q3/Q1  | 500  |
|  | Display Units  | Multi line 9 digit LC Display<br>(Flow rate & volume units are programmable) |
|  | Water Temperature Display °C   |  |
|  | Meter Material   | Cast Iron  |
|  | Maximum Register Capacity (m <sup>3</sup> )  | 999,999,999  |
|  | Minimum Register Capacity (l)  | 5  |
| Sensitivity (l/h)  | 500  |  |
| Output Options - Analog Output, Digital (pulse) Output, Dry Contact Output, Encoder Output, Modbus Protocol Output | SW Standard Specification –<br>Double Digital Pulsed Output<br>10 Litres Forward and Reverse |  |





| METER TYPE                             | METER SPECIFICATION                      |                                  |
|--|--|----------------------------------|
| <b>15mm Sonata</b><br>(To Be Released) | <b>Meter Thread Size (mm &amp; inch)</b> | 15mm / ½                         |
|  | <b>MID Compliant</b>                     | Yes                              |
|  | <b>Register</b>                          | IP68                             |
|  | <b>Maximum Working Pressure</b>          | 16 bar                           |
|  | <b>Maximum Working Temperature</b>       | 0.1 up to 50°C                   |
|  | <b>L – Length w/o Couplings (mm)</b>     | 165                              |
|  | <b>B – Width (mm)</b>                    | 80                               |
|  | <b>H – Height (mm)</b>                   | 117                              |
|  | <b>h – Height (mm)</b>                   | 80                               |
|  | <b>Weight (kg)</b>                       | 0.900                            |
|  | <b>Nominal Flow Rate (m³/h) – Q3</b>     | 1.6 (2.5)                        |
|  | <b>Minimum Flow Rate (l/h) – Q1</b>      | 3.2 (5)                          |
|  | <b>R Q3/Q1</b>                           | 500                              |
|  | <b>Display Units</b>                     | 4,5,6,7,8 or 9                   |
|  | <b>Meter Material</b>                    | PPS, highly reinforced composite |
|  | <b>Maximum Register Capacity (m³)</b>    | 999,999,999                      |
| <b>Sensitivity (l/h)</b>               | 1  |                                  |
| <b>Output Options</b>                  | Multiple Radio Communication Options     |                                  |



| METER TYPE                             | METER SPECIFICATION                  |                                  |
|--|--------------------------------------|----------------------------------|
| <b>20mm Sonata</b><br>(To Be Released) | Meter Thread Size (mm & inch)        | 20mm / ¾                         |
|  | MID Compliant                        | Yes                              |
|  | Register                             | IP68                             |
|  | Maximum Working Pressure             | 16 bar                           |
|  | Maximum Working Temperature          | 0.1 up to 50°C                   |
|  | L – Length w/o Couplings (mm)        | 190                              |
|  | B – Width (mm)                       | 80                               |
|  | H – Height (mm)                      | 117                              |
|  | h – Height (mm)                      | 80                               |
|  | Weight (kg)                          | 0.900                            |
|  | Nominal Flow Rate (m³/h) – Q3        | 2.5 (4)                          |
|  | Minimum Flow Rate (l/h) – Q1         | 5 (8)                            |
|  | R Q3/Q1                              | 500                              |
|  | Display Units                        | 4,5,6,7,8 or 9                   |
|  | Meter Material                       | PPS, highly reinforced composite |
|  | Maximum Register Capacity (m³)       | 999,999,999                      |
| Sensitivity (l/h)                      | 1                                    |                                  |
| Output Options                         | Multiple Radio Communication Options |                                  |



| METER TYPE                             | METER SPECIFICATION                         |                                  |
|--|---|----------------------------------|
| <b>25mm Sonata</b><br>(To Be Released) | Meter Thread Size (mm & inch)               | 25mm / 1                         |
|  | MID Compliant                               | Yes                              |
|  | Register                                    | IP68                             |
|  | Maximum Working Pressure                    | 16 bar                           |
|  | Maximum Working Temperature                 | 0.1 up to 50°C                   |
|  | L – Length w/o Couplings (mm)               | 230                              |
|  | B – Width (mm)                              | 80                               |
|  | H – Height (mm)                             | 121                              |
|  | h – Height (mm)                             | 82                               |
|  | Weight (kg)                                 | 0.900                            |
|  | Nominal Flow Rate (m <sup>3</sup> /h) – Q3  | 6.3 (4)                          |
|  | Minimum Flow Rate (l/h) – Q1                | 12.6 (8)                         |
|  | R Q3/Q1                                     | 500                              |
|  | Display Units                               | 4,5,6,7,8 or 9                   |
|  | Meter Material                              | PPS, highly reinforced composite |
|  | Maximum Register Capacity (m <sup>3</sup> ) | 999,999,999                      |
| Sensitivity (l/h)                      | 1   |                                  |
| Output Options                         | Multiple Radio Communication Options        |                                  |

