

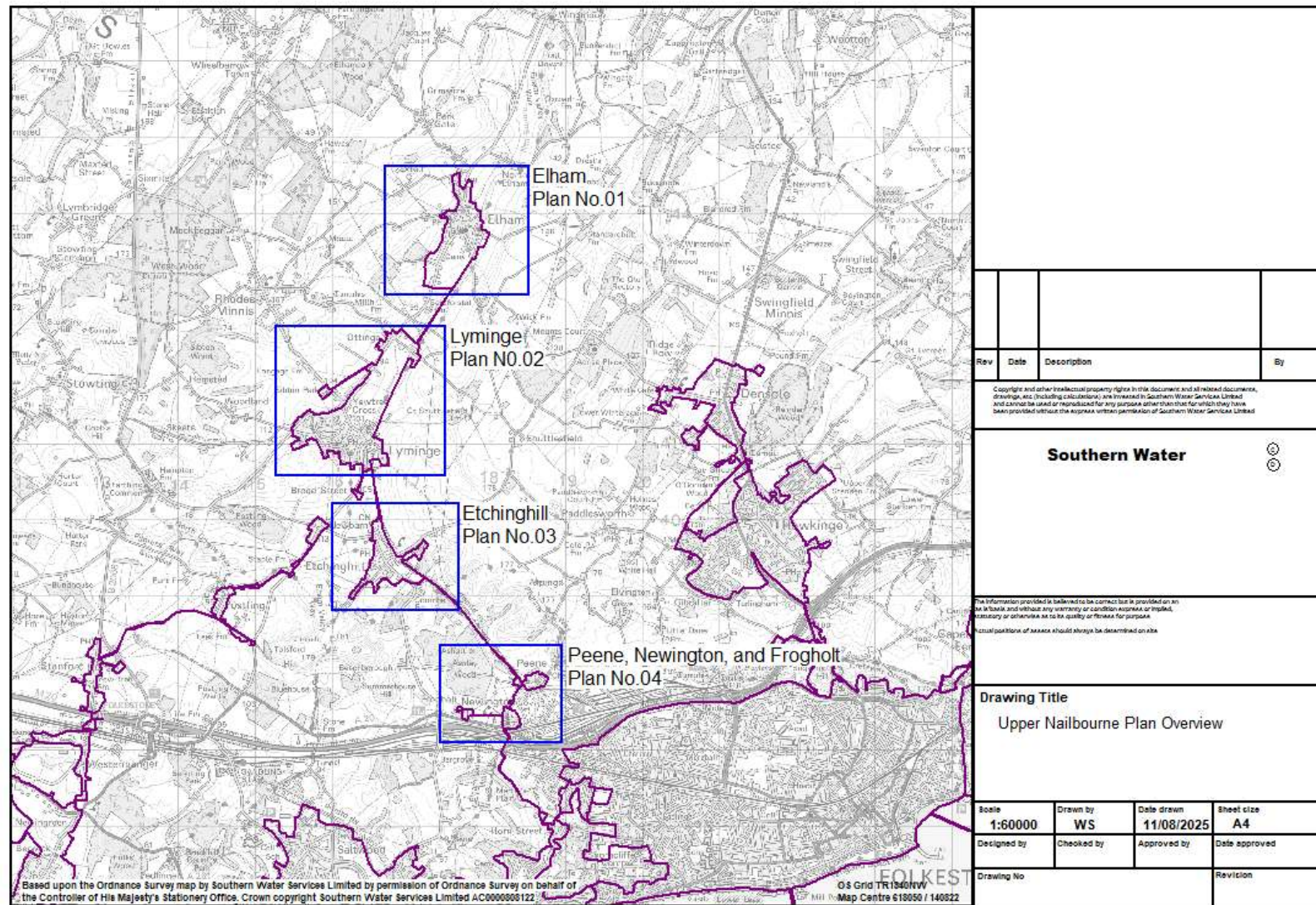
Upper Nailbourne Valley Infiltration Plan

Appendix A – Status of Planned Actions August 2025



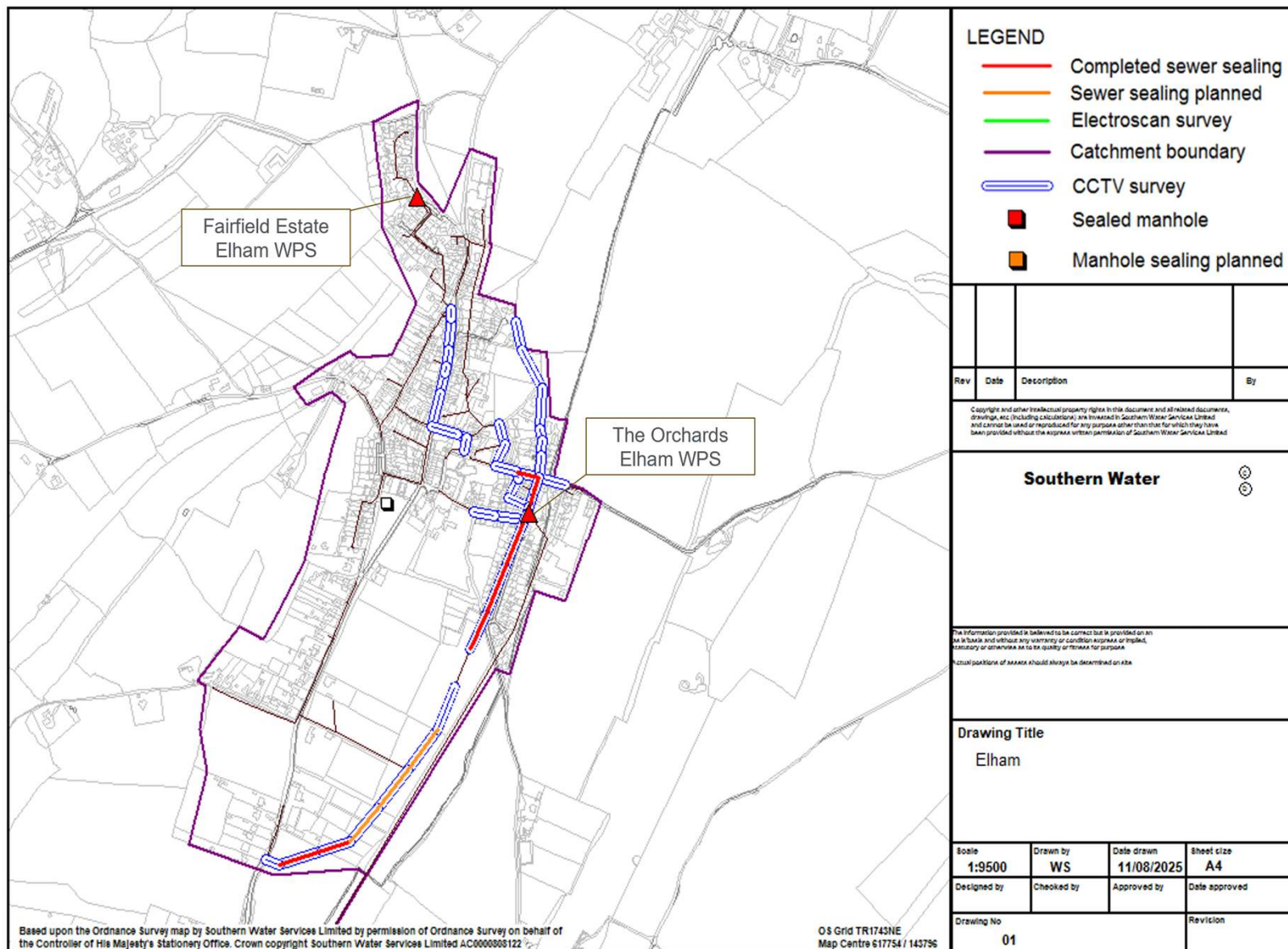
from
**Southern
Water** 

Reference Plan



Action	Km
Length Surveyed	29.5km
Length with no work required	19.6km
Length Sealed	1.04km
Length to be sealed	0.86km
Manholes sealed	0
Manholes to be sealed	0

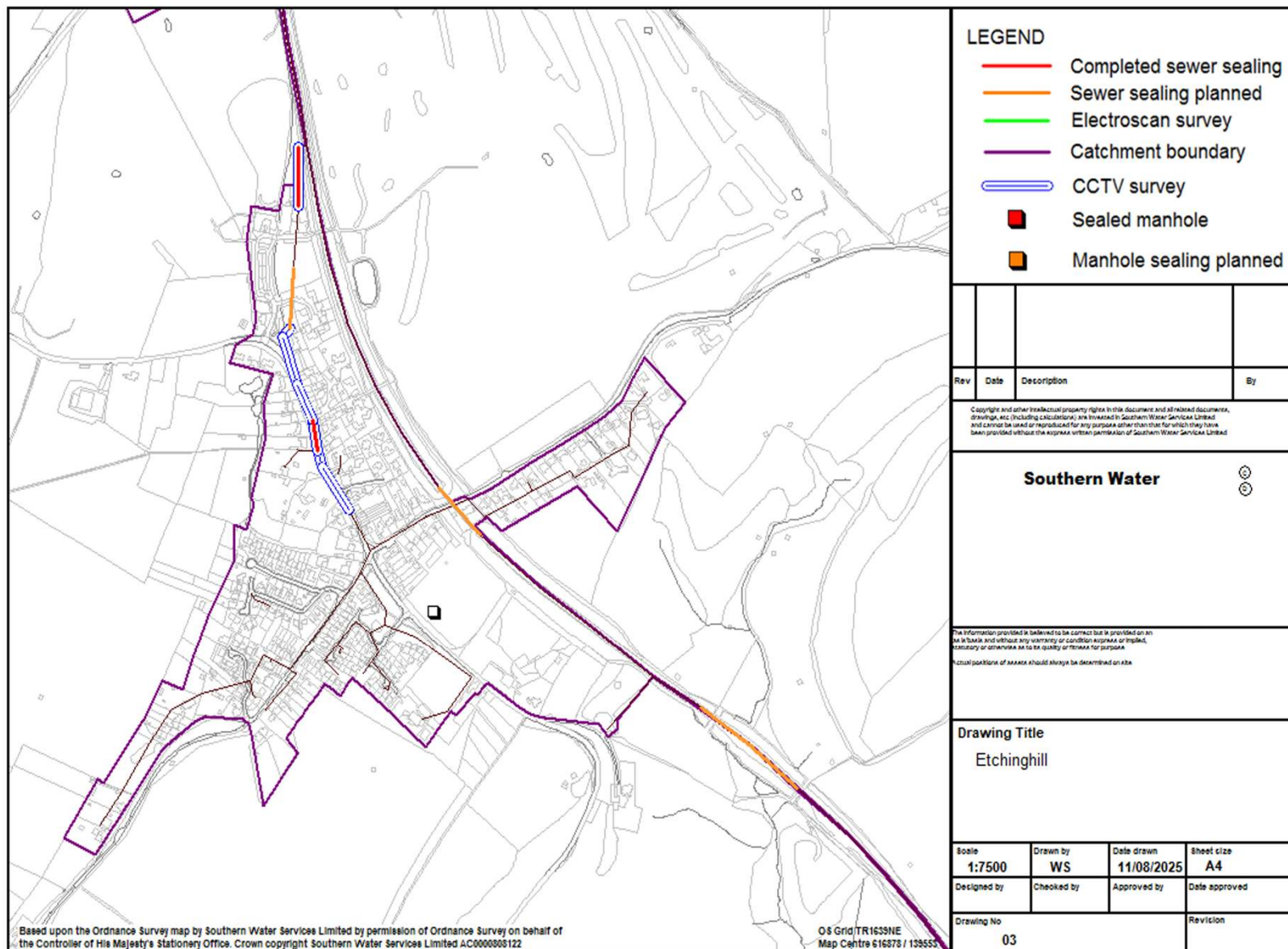




Detailed plan 1

Note – sewers shown as surveyed by cctv or electroscan with no corresponding sealing work have been determined to not require rehabilitation.





Detailed plan 2

Note – sewers shown as surveyed by cctv or electroscan with no corresponding sealing work have been determined to not require rehabilitation.



Detailed plan 3

Note – sewers shown as surveyed by cctv or electroscan with no corresponding sealing work have been determined to not require rehabilitation.

