



# Water meter mission

## Learning objective

To read the school water meter to calculate water savings made through your school Water-Saving Visit and Mission


## Overview

Children learn how to read a water meter to compare the amount of water used before and after your school **Water-Saving Mission**

## Resources

- Photo of water meter from internet
- Clipboards
- **How much water does your school use?** worksheet 4.1

## Curriculum links

-  Eco-Schools - monitoring and evaluating, informing and involving
-  Mathematics

## Activities

### In advance

- Locate your school water meter (the caretaker/site manager will be able to help).

### Starter

- Show children a photo of a water meter. Ask them to guess what it does.
- Explain the water coming into your school flows through a pipe. A water meter is fitted in the pipe and measures the amount of water used.

## Main

### Week before your school's Water-Saving Mission

- Explain to children that they will be taking water meter readings to compare the amount of water used before and after the school's **Water-Saving Mission**.
- Show pupils how to take a meter reading – see [southernwater.co.uk/your-meter-reading](http://southernwater.co.uk/your-meter-reading).
- **Safety:** children must be accompanied by staff when taking the readings.
- Read the water meter at the same time every morning.
- Use the readings to calculate how much water was used each day in your school and complete the last column.
- Display the readings on the classroom wall using an A3 photocopy of the chart.
- Children use the completed table to draw a bar graph for 'Week One' showing how much water was used each day.
- Review questions on worksheet together.

### Week after your school's Water-Saving Mission

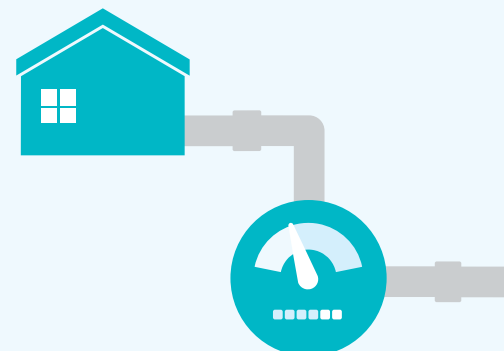
- Children repeat water meter readings for another week and record in table.
- Children complete bar graph for 'Week Two'.
- Compare the weekly total water use before and after your school's **Water-Saving Mission**.
- Children calculate how much water your school has saved through its **Water-Saving Mission** and visit.

## Classroom-based alternative

- Take water meter readings in advance to give to children.

## Plenary

- Ask children to suggest reasons for the reduced water consumption (engineer's water-saving visit, new knowledge and activities completed as part of **Water-Saving Mission**).
- Decide how to share the findings with the whole school (assembly, display graphs on notice board, newsletter).





# How much water does your school use?

## What to do

1. You are going to read your school's water meter for one week before your Water-Saving Mission and for one week after so you can work out how much water your school has saved.
2. Follow your teacher's instructions to read the school's water meter every morning and fill in the table below.
3. Safety: Only read the water meter when you are with a staff member.
4. Use your completed tables to draw a bar graph and calculate how much water you have saved by becoming Water Heroes.

## Week One

### How much water is your school using BEFORE your Water-Saving Mission?

	Monday	Tuesday	Wednesday	Thursday	Friday	The next Monday
Reading at start of day						
Reading at start of next day						
Water used in litres						

Total week one water use = \_\_\_\_\_ litres

### How much water was used at the weekend?

Next Monday start of day reading – Total week one water use = \_\_\_\_\_ litres

What could water have been used for at the weekend at your school?

### Estimate how much water the school would use in a month/year

Monthly school water use estimate (remember to include water used at the weekend too):

Week water use x 4 weeks in a month = \_\_\_\_\_ litres

Yearly school water estimate = monthly estimate x 12 = \_\_\_\_\_ litres

### How will the school holidays affect water use?

Will any water still be used and for what?



# How much water does your school use? continued

## Week Two

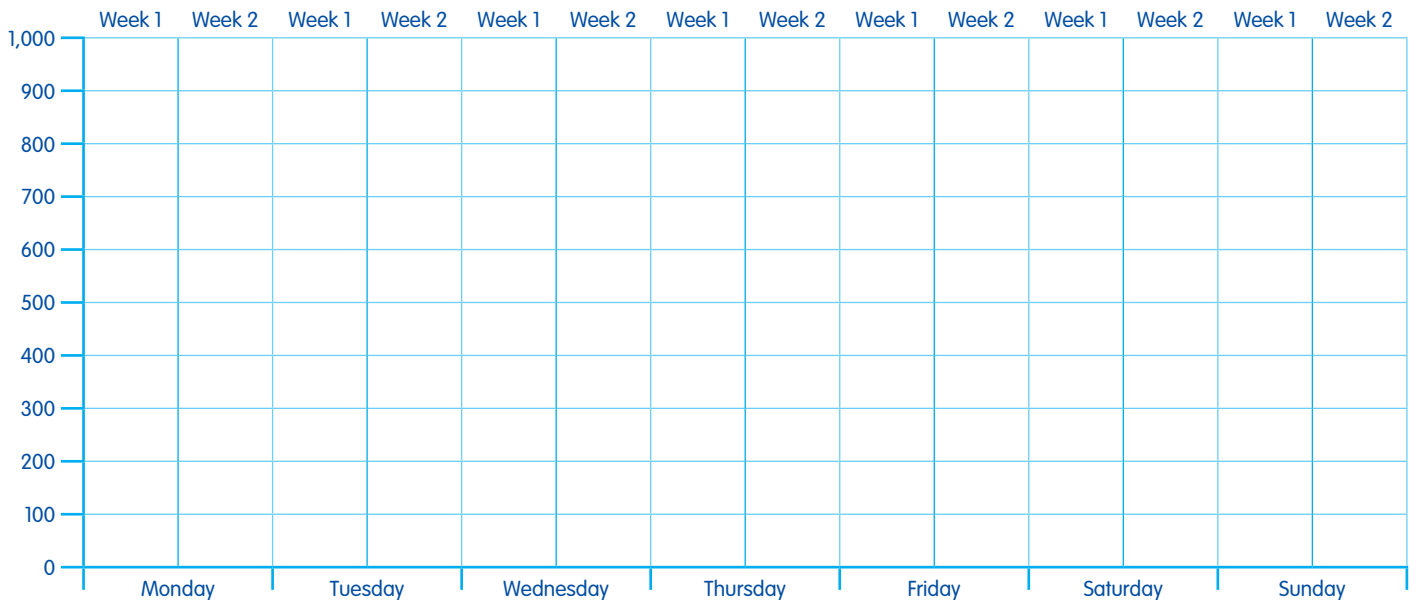
How much water is your school using **AFTER** your Water-Saving Mission?

	Monday	Tuesday	Wednesday	Thursday	Friday	The next Monday
Reading at start of day						
Reading at start of next day						
Water used in litres						

**Total week two water use = \_\_\_\_\_ litres**

## Display your results

Draw a bar graph to represent the water used in your school both weeks.  
Choose two colours to show the two weeks.



**Is water use higher on any days?**

**Can you suggest reasons why this might be?**

**How much water has your school saved?**

**Water saved per week = Total week one water use – Total week two water use = \_\_\_\_\_ litres**

**How many people could use this saved water and what activities could they do with it?**