

St Marybourne Infiltration Plan

Appendix A – Work Complete

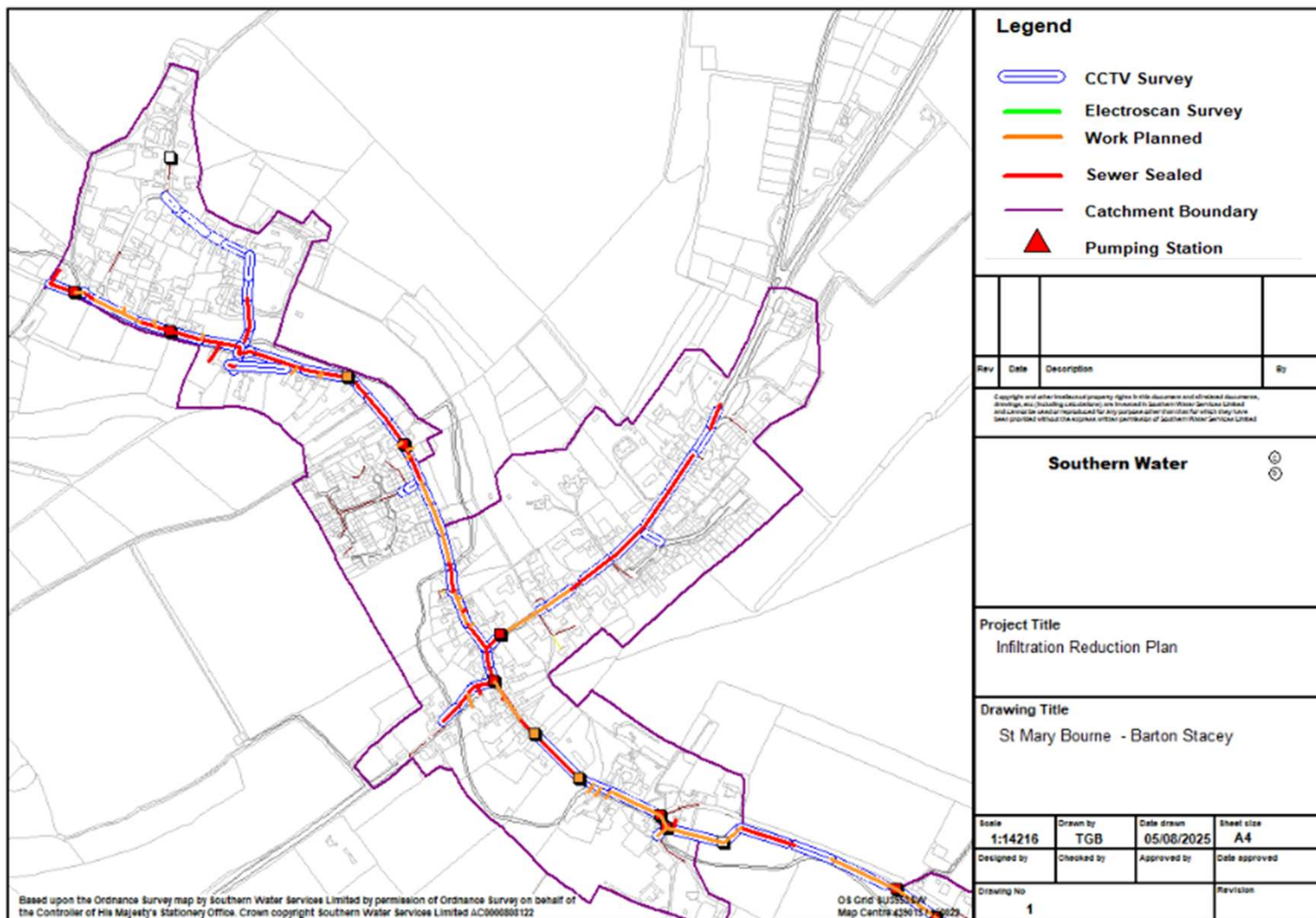


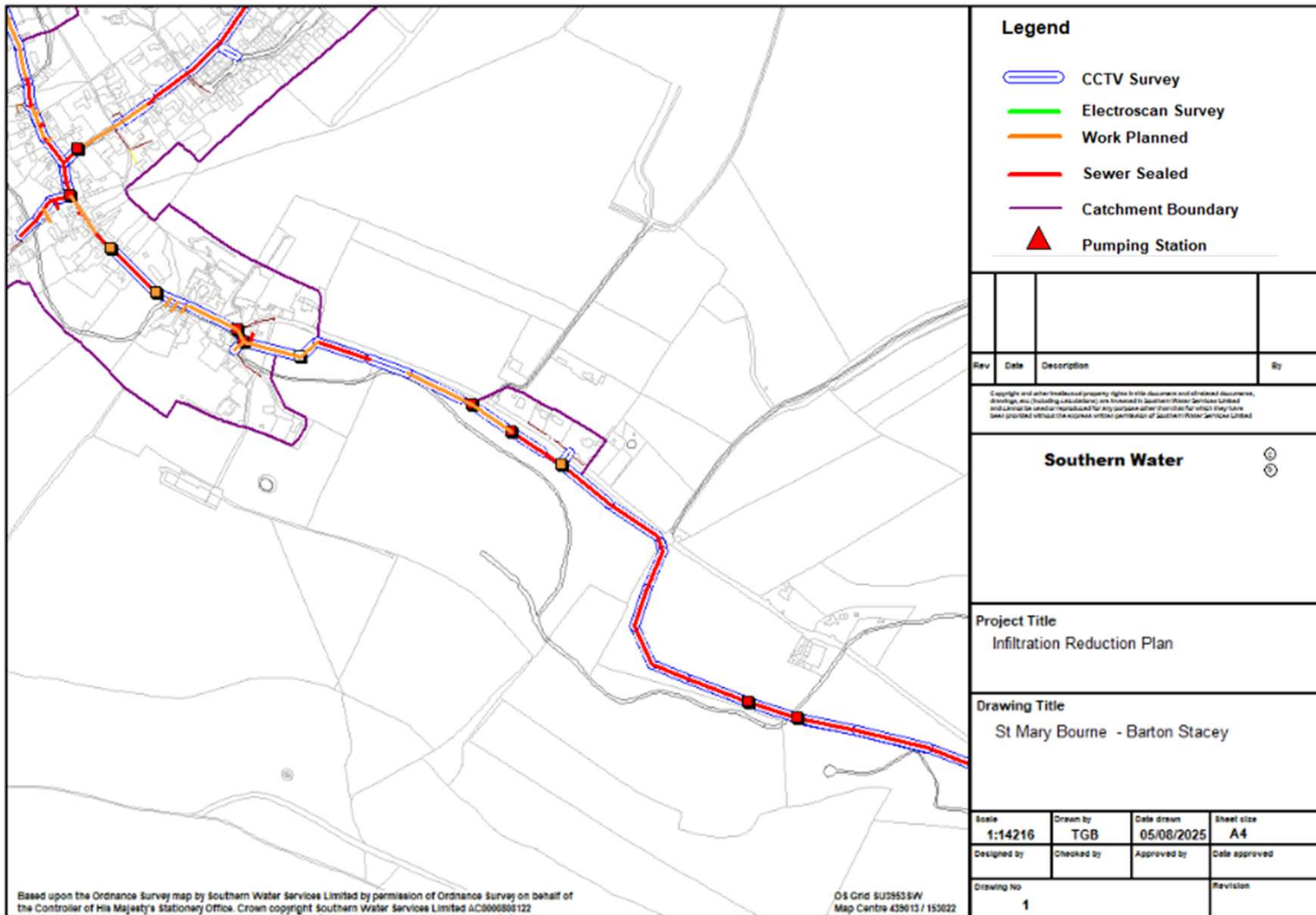
from
**Southern
Water** 

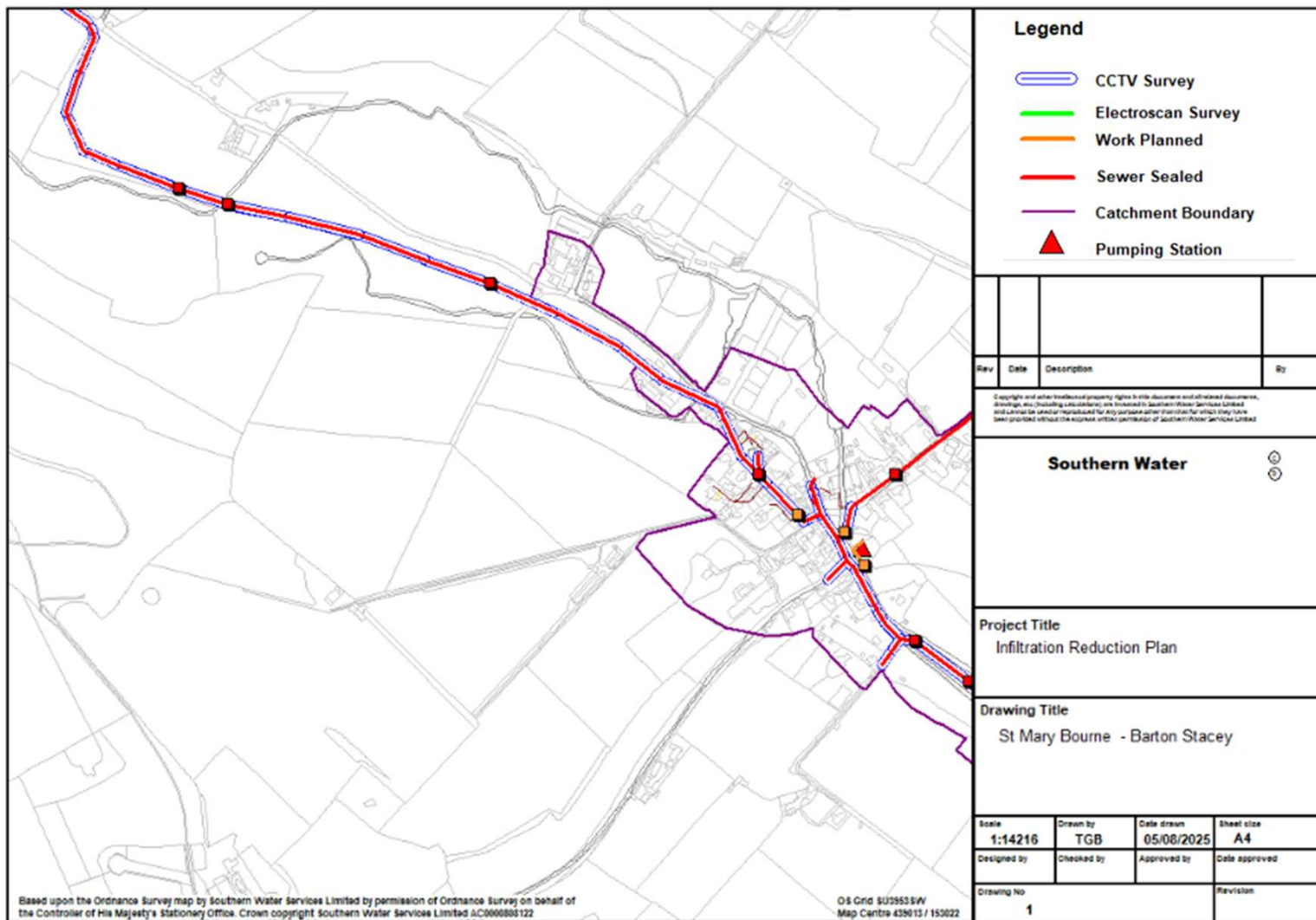
Summary of work completed

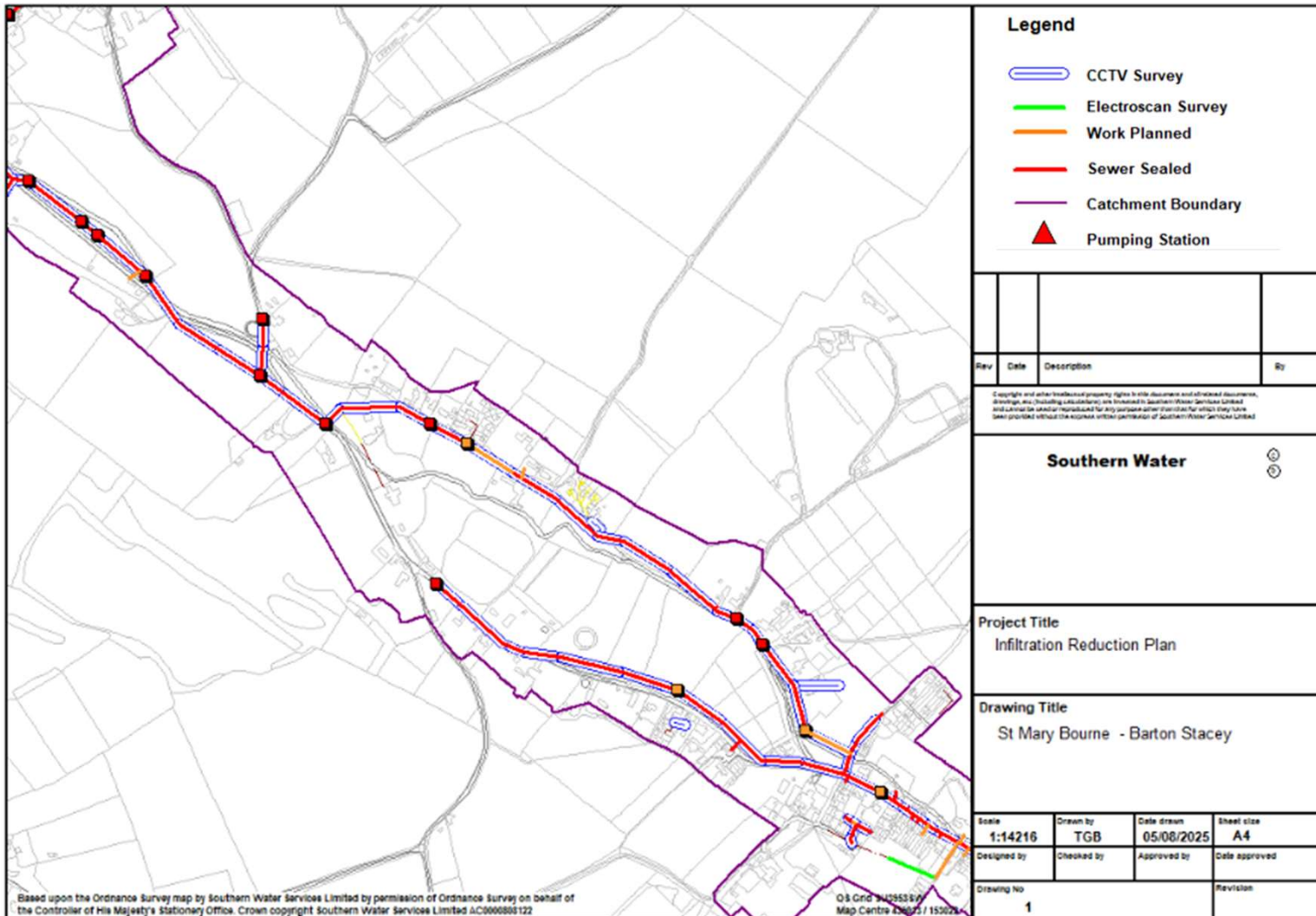
Action	Km of sewer
CCTV Length	32.7
Electroscan	5.4
Sewer Length Sealed	15.27
Sewers not requiring sealing	23.2
Manholes Sealed No.	70

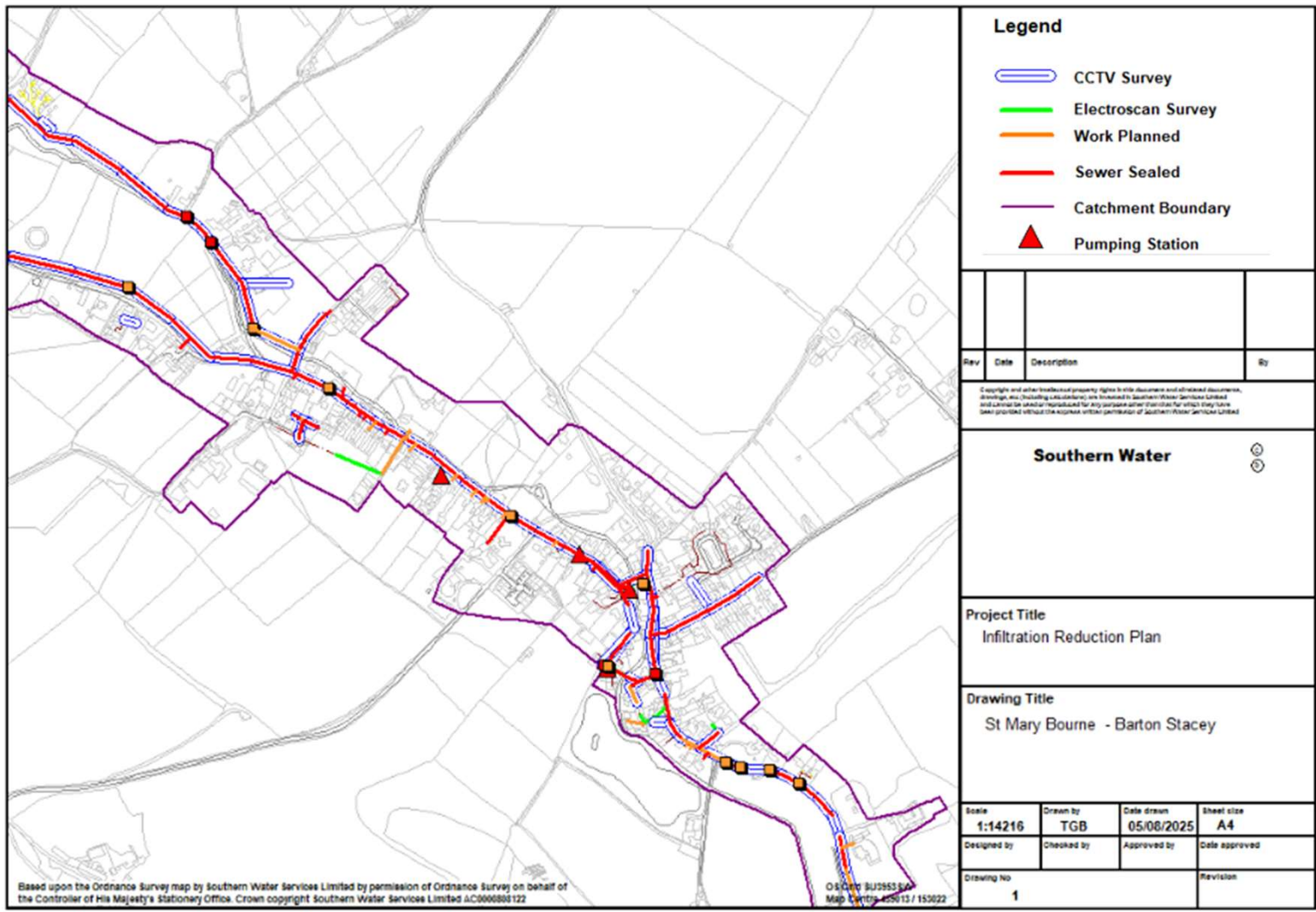
Reporting Year	Surveyed (km)	Sewers Sealed (km)	Manholes Sealed
Pre 2013	23.05	10	0
2013	6.9	0.4	19
2014	1.91	0.1	0
2015	0.17	1.3	21
2016	0.51	0.5	6
2017	0.03	0.7	0
2018	0.13	0.3	0
2019	0	0	0
2020	0	0.2	0
2021	5.4	0.1	0
2022	0	1.6	0
2023	0	0	0
2024	0	0	0
2025	0	0.37	24
TOTAL	32.7	14.9	46

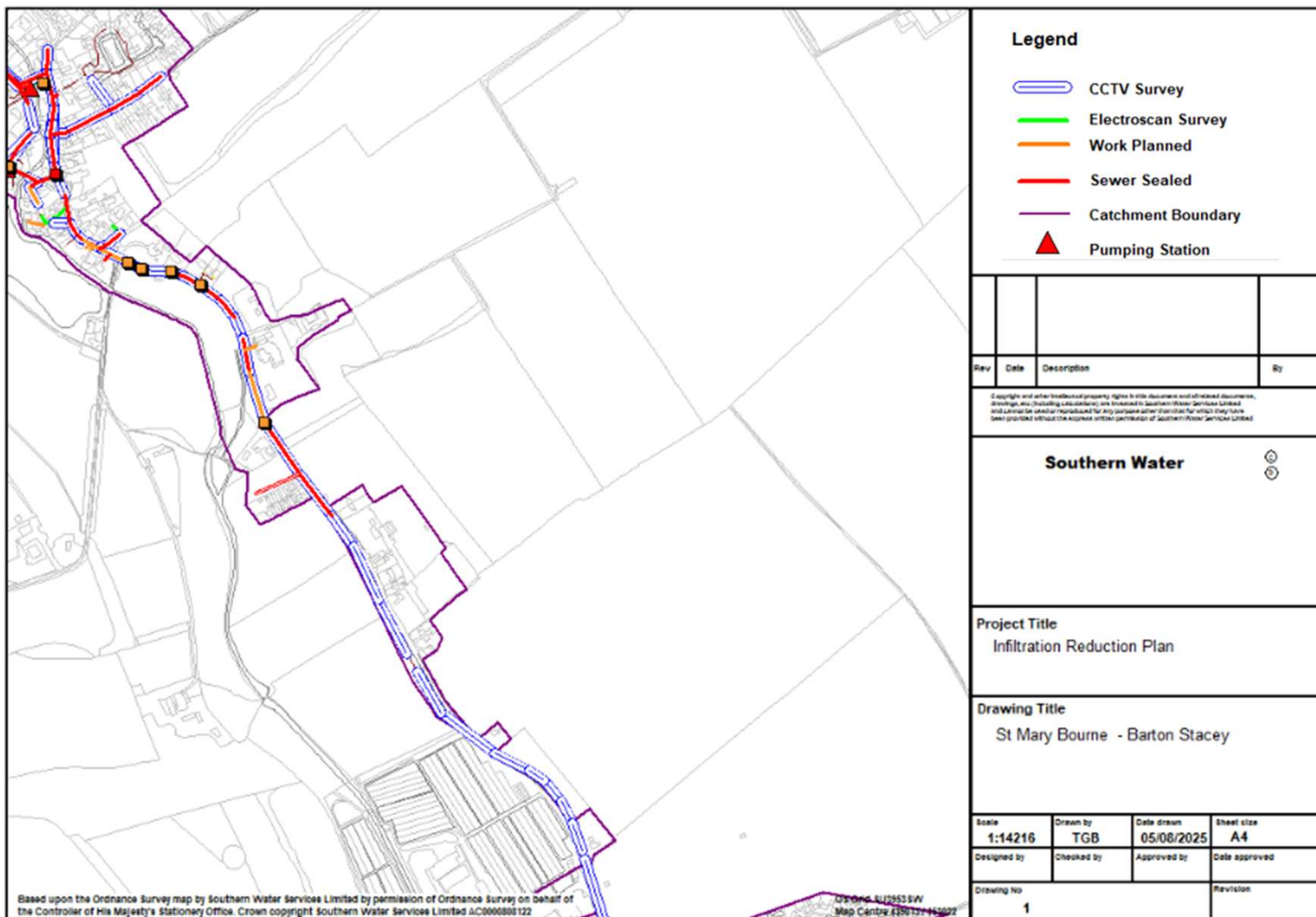


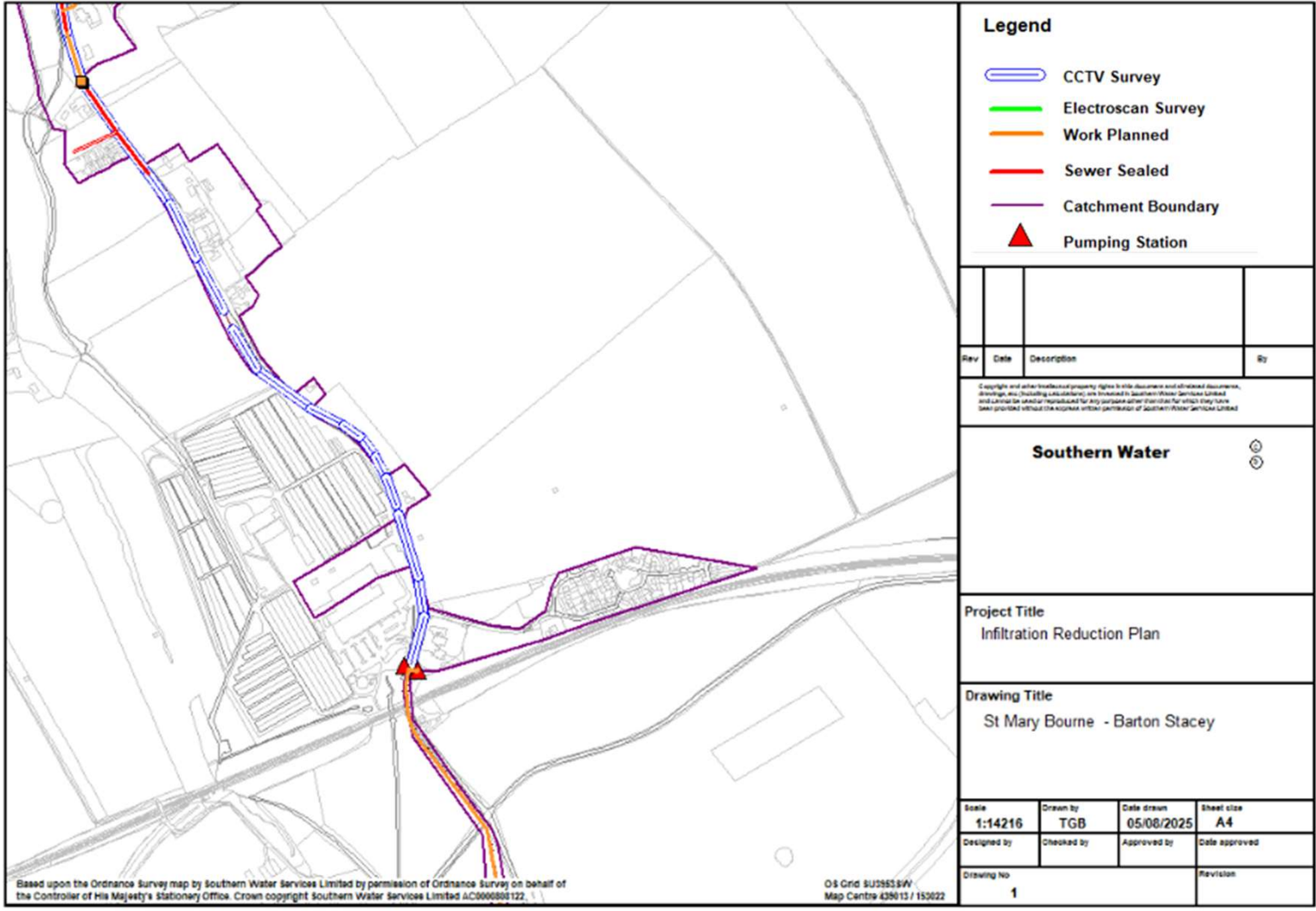






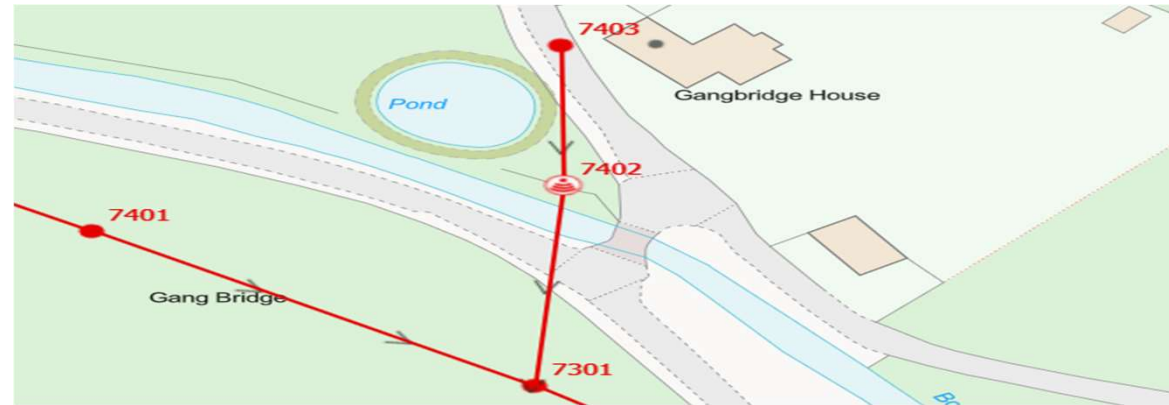




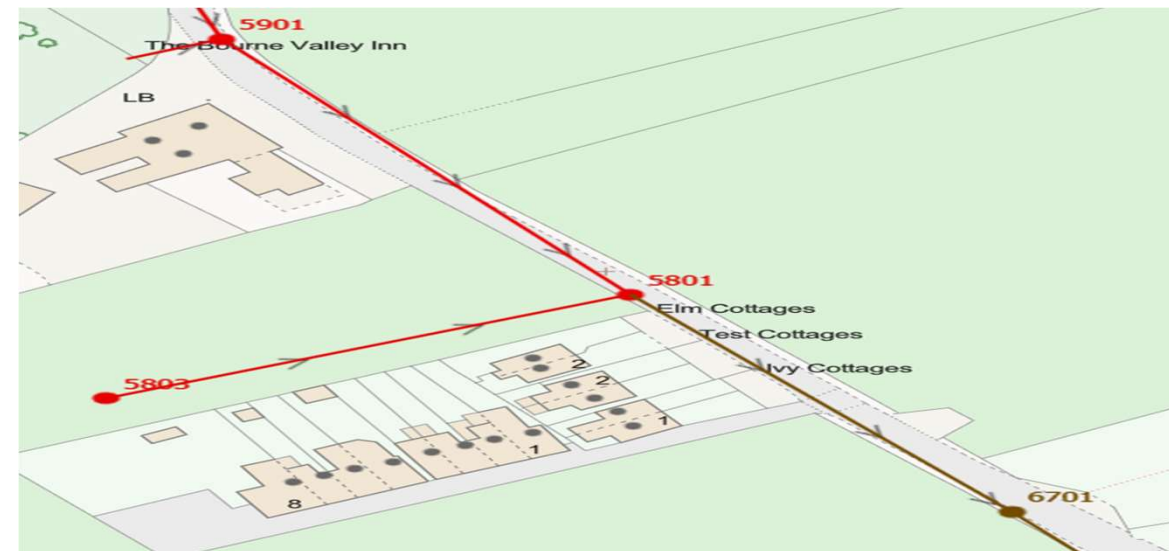


Work completed in summer/autumn 2024

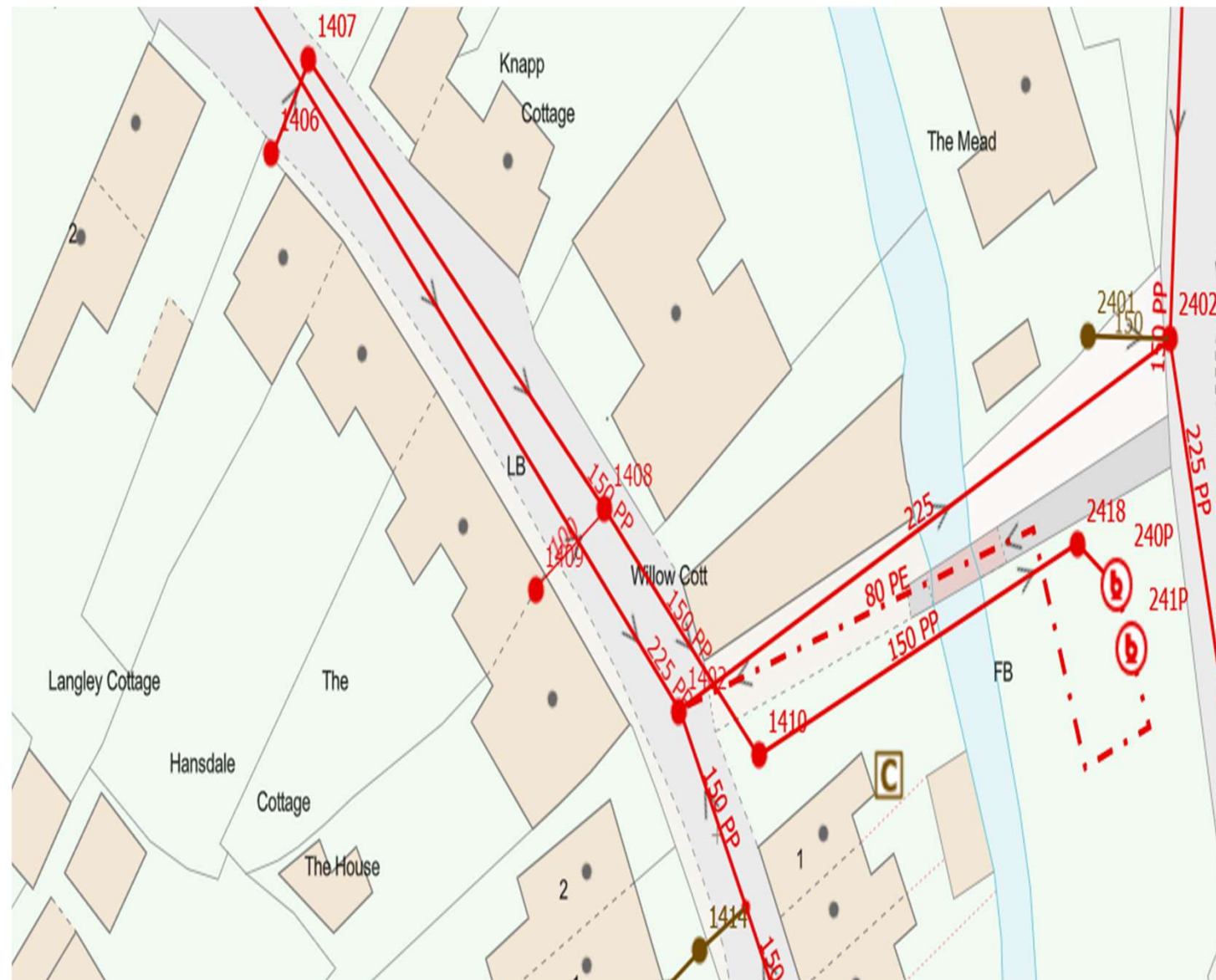
1. Piping through sewer at Gangbridge lane to prevent the seasonal pond entering manhole 7402 – completed in September 2024



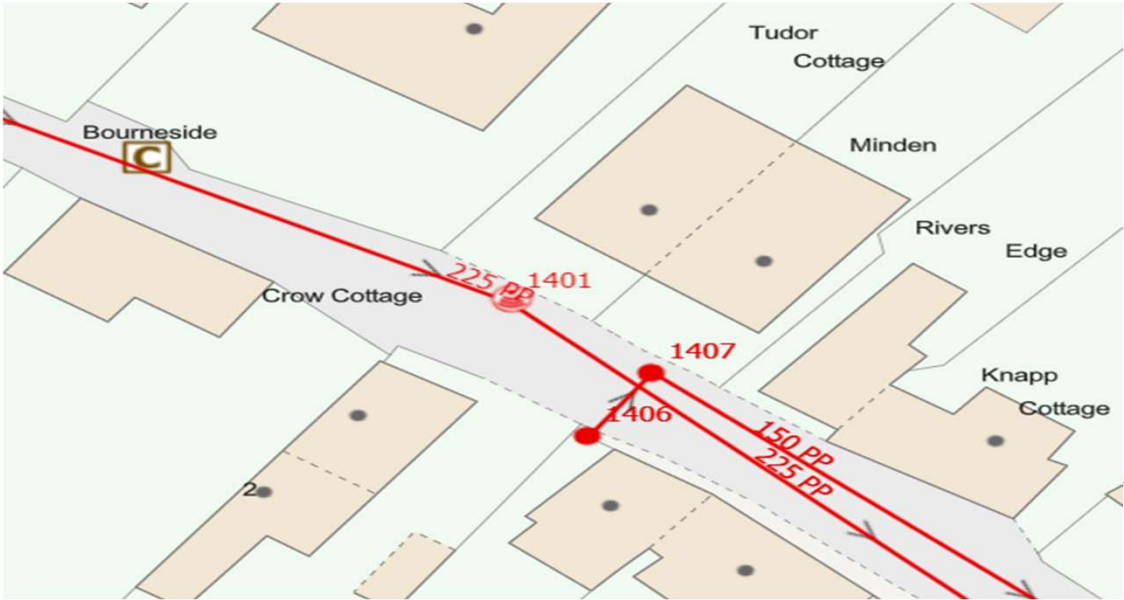
2. Pipe burst from manhole 5901 to 6701 & relay to remove the belly in the sewer —completed in September 2024



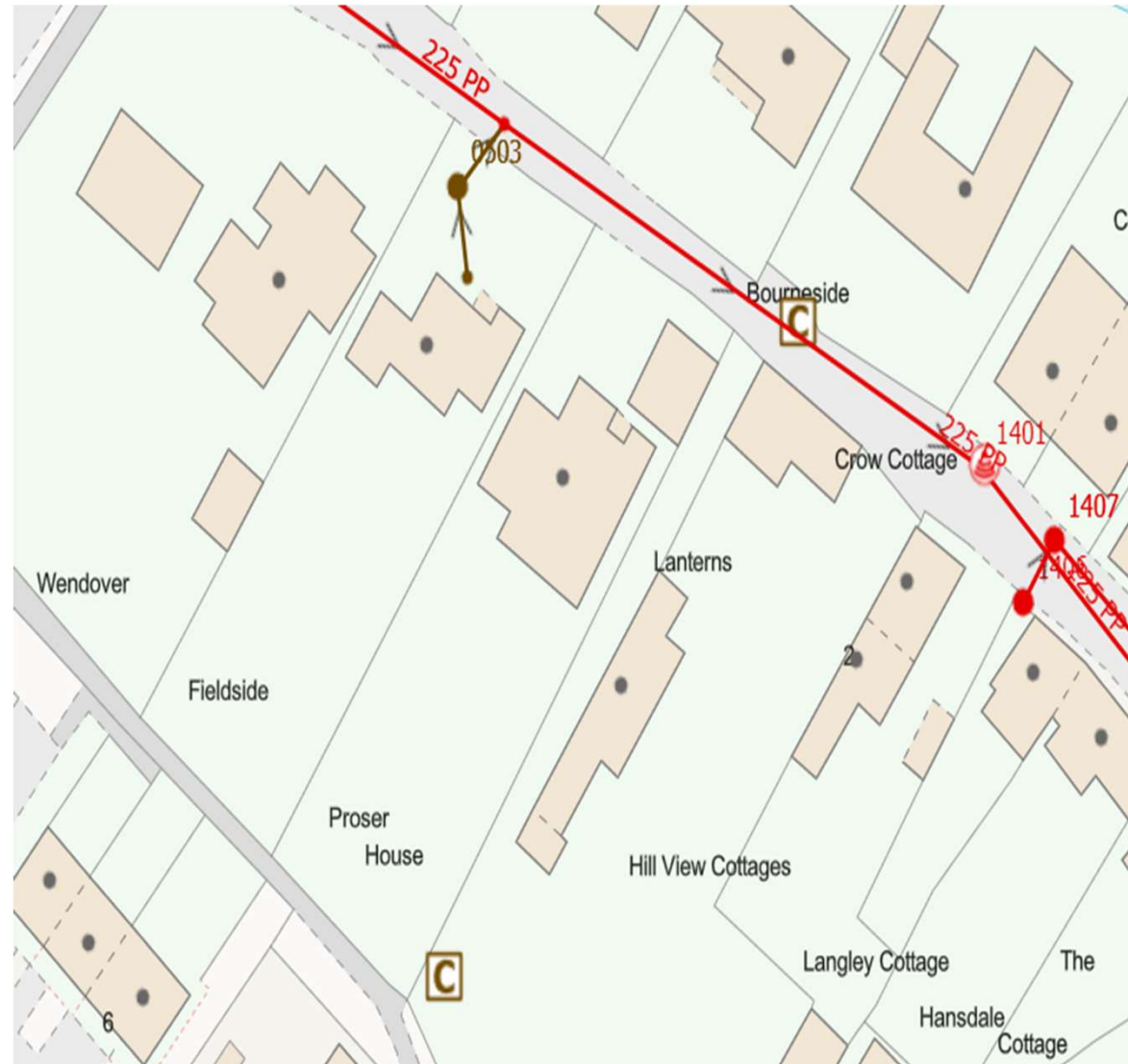
3. Reline the rider sewer from manhole 1406 through 1407, 1408, 1410 & 2418 to the pumping station at Holdaway Cottages – completed Autumn 2024
4. Lining of the laterals from four properties to the rider sewer – Langley Cottage, Hansdale, The Cottage & The House – completed Autumn 2024



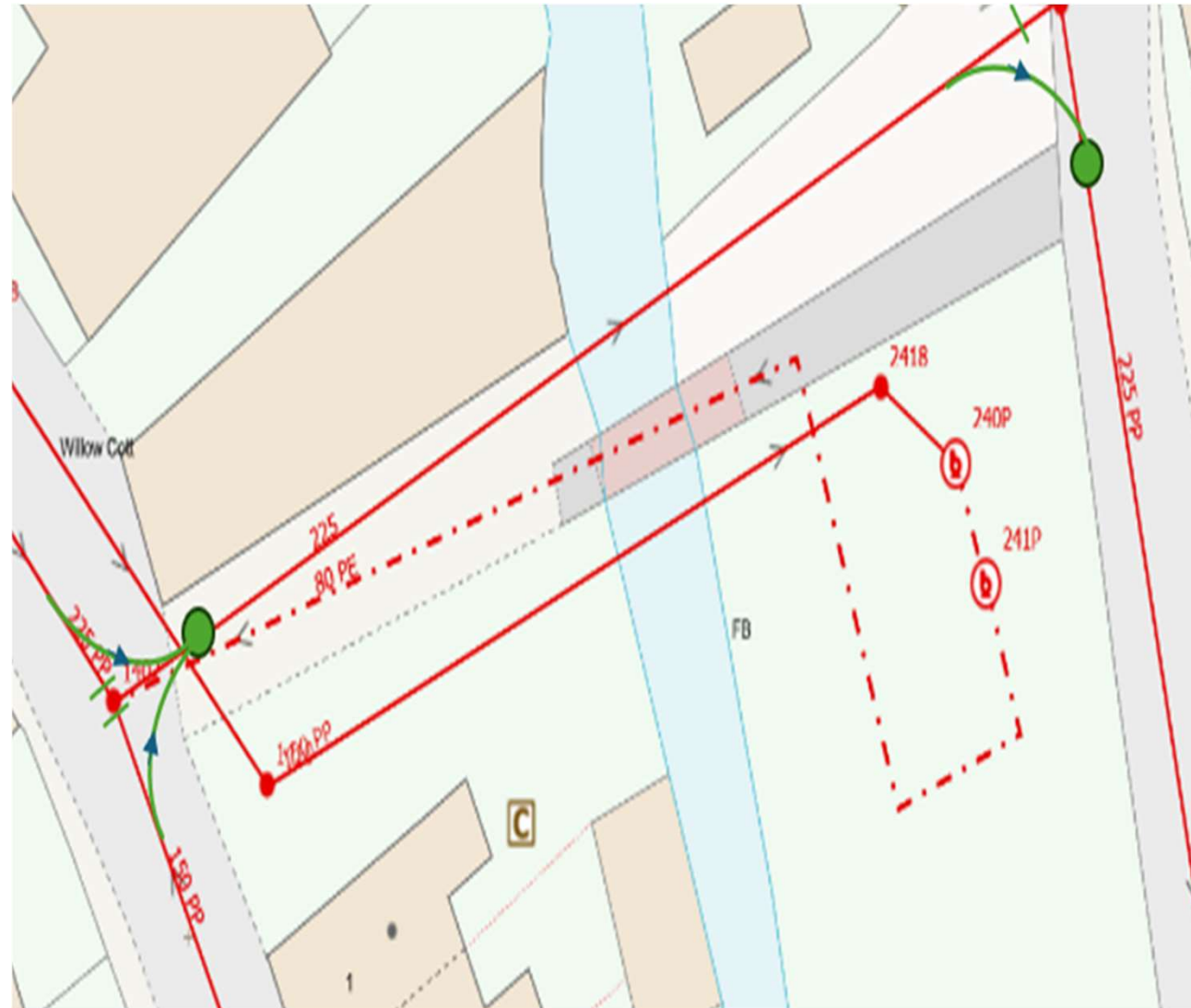
-



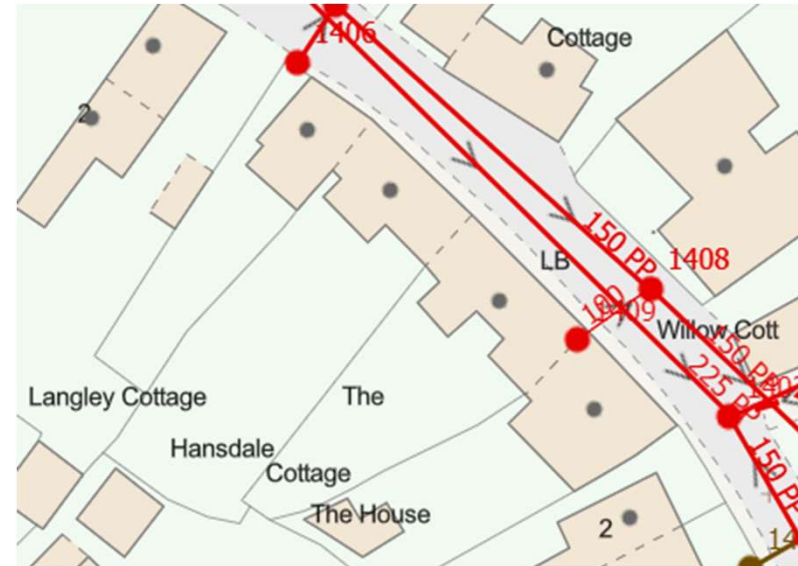
8. Extend the rising main from the micro pumping station in manhole 0503 to join the 150mm rider sewer at manhole 1407 –completed Autumn 2024



11. Install two long radius bends at manhole 1402 and one long radius bend at manhole 2402 to improve conveyance of flows – completed September 2024



12. Residents of Langley Cottage, Hansdale, The Cottage & The House to no longer pump their basements out to the sewer network
13. Install Annular seals to the end of 10 private laterals – in progress



Examples of manholes in the village which have been sealed to prevent groundwater ingress

