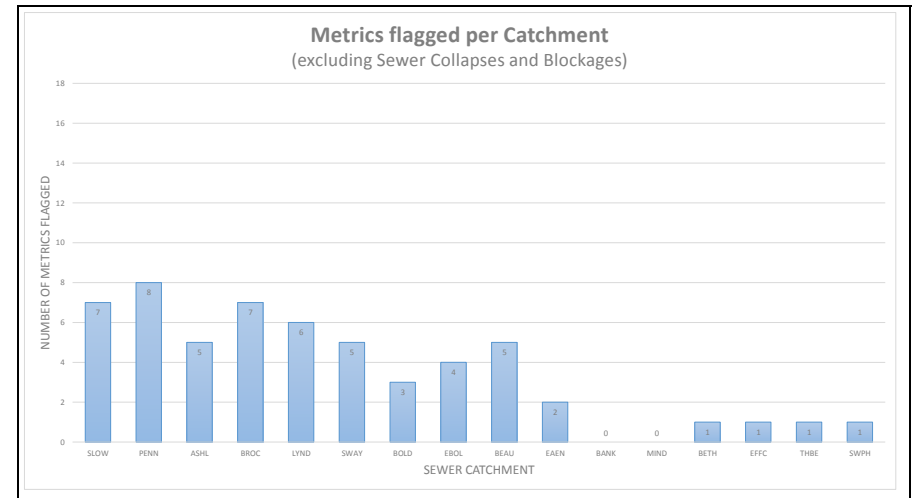
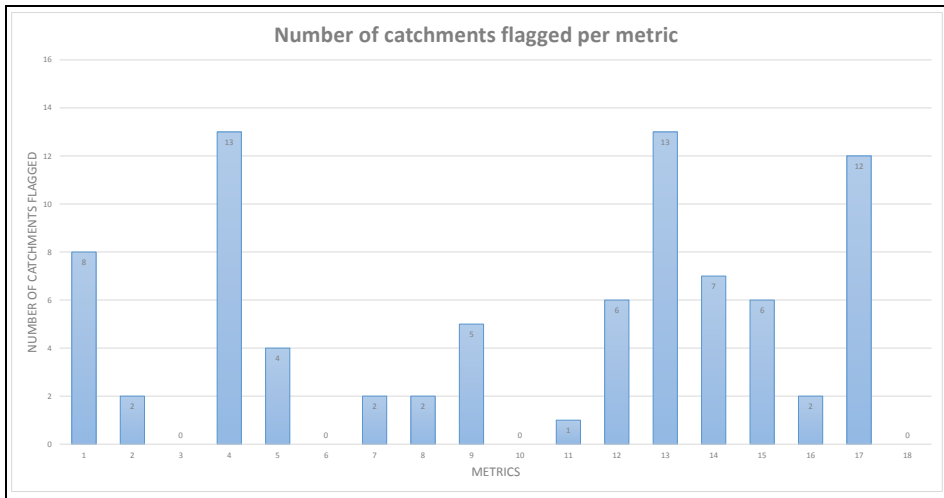


Drainage & Wastewater Management Plans (DWMPs)
Risk Based Catchment Screening (RBCS)
 Flagging risk of vulnerability to future changes in each sewer catchment
 July 2020



Sewer Catchments (DWMP Level 3 Tactical Planning Units)				CATCHMENT ANALYSIS																					
River Basin District Catchment (DWMP Level 2)	Sewer Catchment Ref	Sewer Catchment Name	Total equivalent population served	Total length of sewers (km)	1	2	3	4	5	6	7	8	9	10	11	12	13	14	15	16	17	18	Number of Tier 1 and individual Tier 2 metrics flagged	Number of Tier 1 and Tier 2 metrics flagged (excl. blockages and collapses)	Proceed to BRAVA?
					<small> Catchment Characterisation Inherent risk (Blockage) Discharge to Sensitive Receiving (part A) Discharge to Sensitive Receiving (part B) Storm Overflow Assessment Framework (SOAF) Capacity Assessment Framework (CAF) Internal Flooding (from sewers inside properties) External Flooding (from sewers outside properties) Risk of Pollution Incidents (Cat 1-3) Risk of WQWV Quality non-Compliance Risk of WQWV DWPR non-Compliance (Dry Weather Flow) Storm Overflows Other Risk Management Authority Systems Planned Residential Development Environmental Programme (WMP) Sewer Collapses Sewer Blockage Customer Complaints </small>																				
New Forest	SLOW	SLOWHILL COPSE MARCHWOOD	73,836	494.037																			10	7	YES
New Forest	PENN	PENNINGTON	50,699	420.750																			10	8	YES
New Forest	ASHL	ASHLETT CREEK FAWLEY	14,511	94.447																			8	5	YES
New Forest	BROC	BROCKENHURST	3,762	43.707																			9	7	YES
New Forest	LYND	LYNDHURST	2,937	37.615																			8	6	YES
New Forest	SWAY	FLEXFORD LANE SWAY	2,528	25.522																			7	5	YES
New Forest	BOLD	BOLDRE	621	9.310																			4	3	YES
New Forest	EBOL	EAST BOLDRE	390	3.626																			6	4	YES
New Forest	BEAU	BEAULIEU VILLAGE	188	5.625																			6	5	YES
New Forest	EAEN	EAST END	114	0.139																			4	2	YES
New Forest	BANK	BANK	101	2.778																			2	0	NO
New Forest	MIND	MINSTEAD	83	1.050																			1	0	NO
New Forest	BETH	BEAULIEU HUMMICKS	51	1.474																			3	1	YES
New Forest	EFCC	EFFORD FARM COTTAGES LYMINGTON	35	0.000																			1	1	YES
New Forest	THBE	THORNS BEACH	16	0.799																			3	1	YES
New Forest	SWPH	PASSFORD HOUSE SWAY	5	0.451																			1	1	YES
Total		16	149,877	1,141.930																					14



General Info:	
1.	The most catchments have been flagged under Metrics 4 (Discharge to Sensitive Receiving (part B)), and 13 (Overlap with other Risk Managed Authorities Systems) - both with 13.
2.	The catchments that are flagged in the most metrics are: SLOWHILL COPSE MARCHWOOD (SLOW) & PENNINGTON (PENN), with 10 metrics each.
3.	Zero catchments have not been flagged in any of the Tier 1 Metrics.