



# Webinar on: Drainage and Wastewater Management Plan 2028 (DWMP28)

Simon Parker, Director of Asset Management  
David Murphy, Wastewater Investment Strategy Manager

January 2026

from  
**Southern  
Water.** 

The Southern Water logo graphic consists of three stylized, wavy blue lines of varying lengths, positioned to the right of the text 'Southern Water.'

# What will we cover today?

- Context for the DWMP
- What is a DWMP?
- National Guidance: How to produce a DWMP
- Working with others to co-create our DWMP

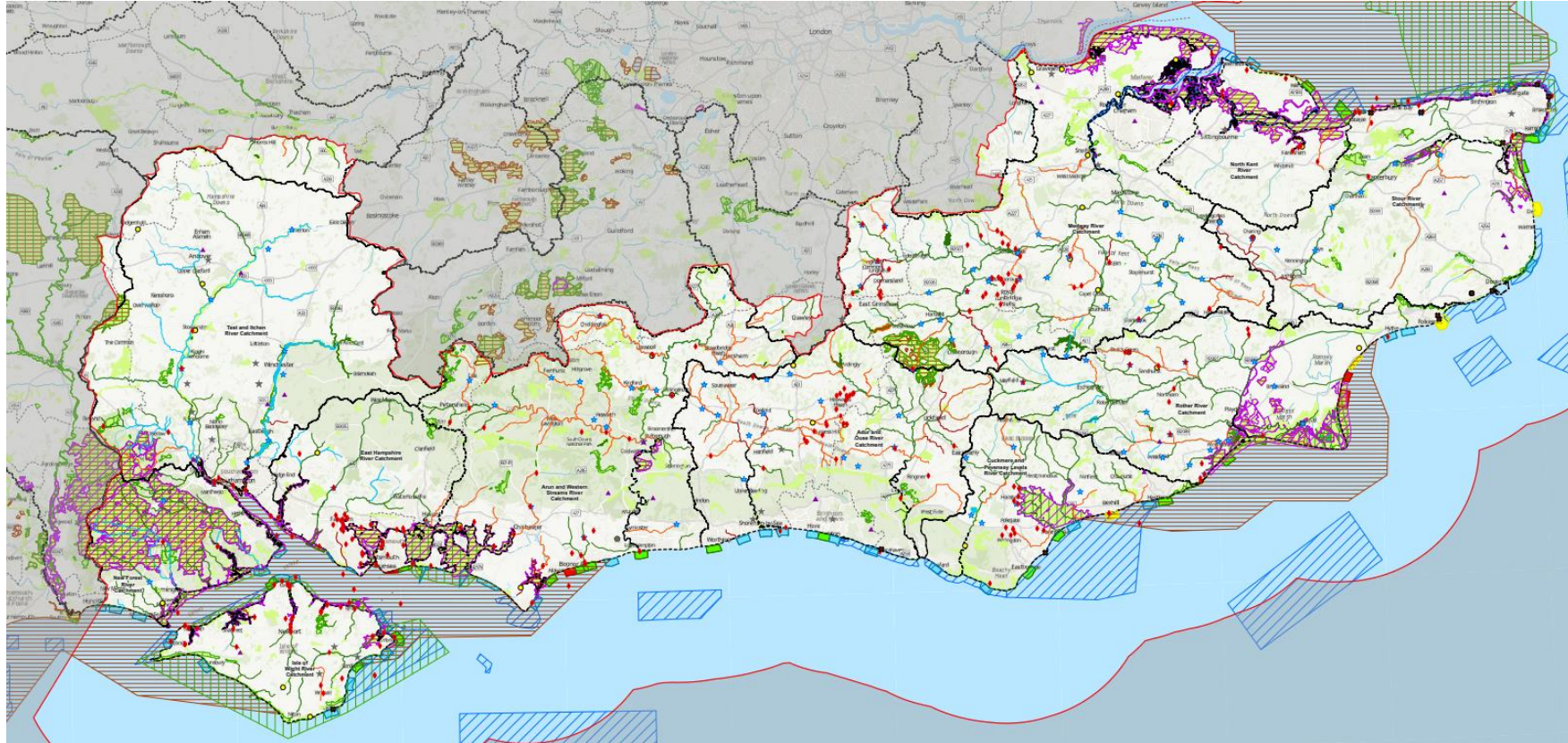


# Context

Simon Parker, Director of Asset Management



# Our regional map shows where we are delivering service enhancements in the current investment period (2025 – 2030)



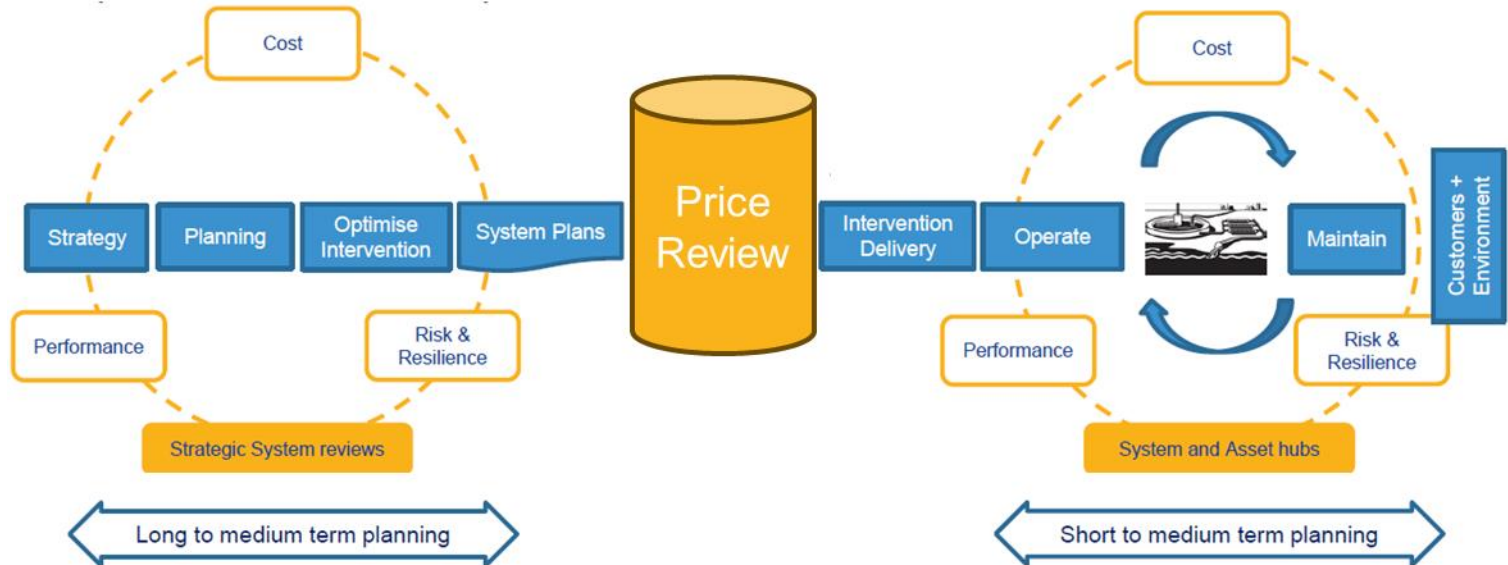
# Long-term planning is a core to Water Industry Asset Management and feeds directly into the Ofwat Price Review process to secure the funding allocations



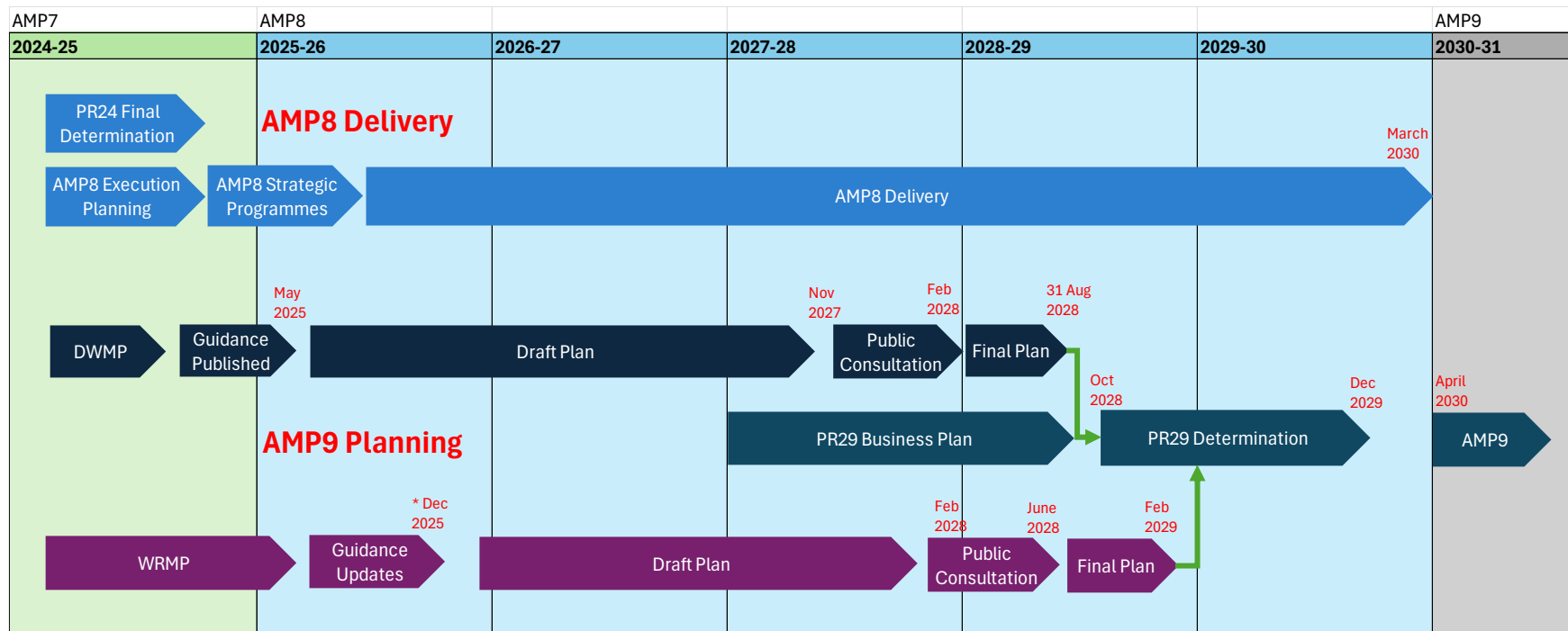
Drainage and Wastewater Management Plan & Water Resources Management Plan

Price Review Process to secure funding

In-AMP Delivery



# The Business Planning Process and timetable means we are already working towards AMP9 by preparing our DWMP and WRMP, whilst still delivering a huge programme for AMP8



\* Consultation on Environment Agency's proposed updates to the water resources planning guideline (WRPG).

# What is a DWMP?

David Murphy  
Wastewater Investment Strategy Manager





# DWMP is a 25 year plan for how we will manage and develop our drainage and wastewater systems



- DWMP became a statutory requirement in Sept 2024
- Section 79 of Environment Act 2021 sets out the mandatory requirements
- A DWMP **must** address in particular:
  - the **capacity** of our drainage and sewerage systems
  - **current and future demands** on our drainage and sewerage systems
  - the **resilience** of our drainage and sewerage systems
  - the **measures we intend to take** or continue
  - the likely **sequence and timing** for implementing those measures
  - relevant **environmental risks** and how those risks are to be mitigated



Environment Act 2021

STATUTORY INSTRUMENTS

2024 No.639 (C.40)

ENVIRONMENTAL PROTECTION

The Environment Act 2021

(Commencement No.9 and

Transitional Provisions)

Regulations 2024

# National Guidance: How to produce a DWMP



# Defra published new national guidance for the DWMP in May 2025



- Re-write but builds upon our approach in Cycle 1
- Aligns with Ofwat & EA Performance Reporting
- Wider scope – greater focus on risks to the environment

[Guidelines for Statutory Drainage and Wastewater Management Plans \(DWMPs\)](#)  
[- GOV.UK](#)

**GOV.UK**

---

**Department for Environment, Food & Rural Affairs**

[Environment Agency](#)   [Office for Water Services](#)

[Welsh Government](#)   [Natural Resources Wales](#)

Guidance  
**About the guidance and planning for drainage and wastewater management**  
Published 20 May 2025



[Office for Water Services](#)

Guidance  
**How to form, publish and maintain your drainage and wastewater management plan (DWMP)**  
Published 20 May 2025

# The DWMP uses Performance Indicators to understand the performance of our systems – now and into the future - to identify the actions we need to take



- Our recent performance is the starting point for the DWMP to understand current risks to customers and the environment and where we will be by 2030
- We will consider how the performance of our infrastructure will change in the future if we “do nothing different” to maintenance and operation – to identify the need for future investment
- The Performance Indicators used in the DWMP are:

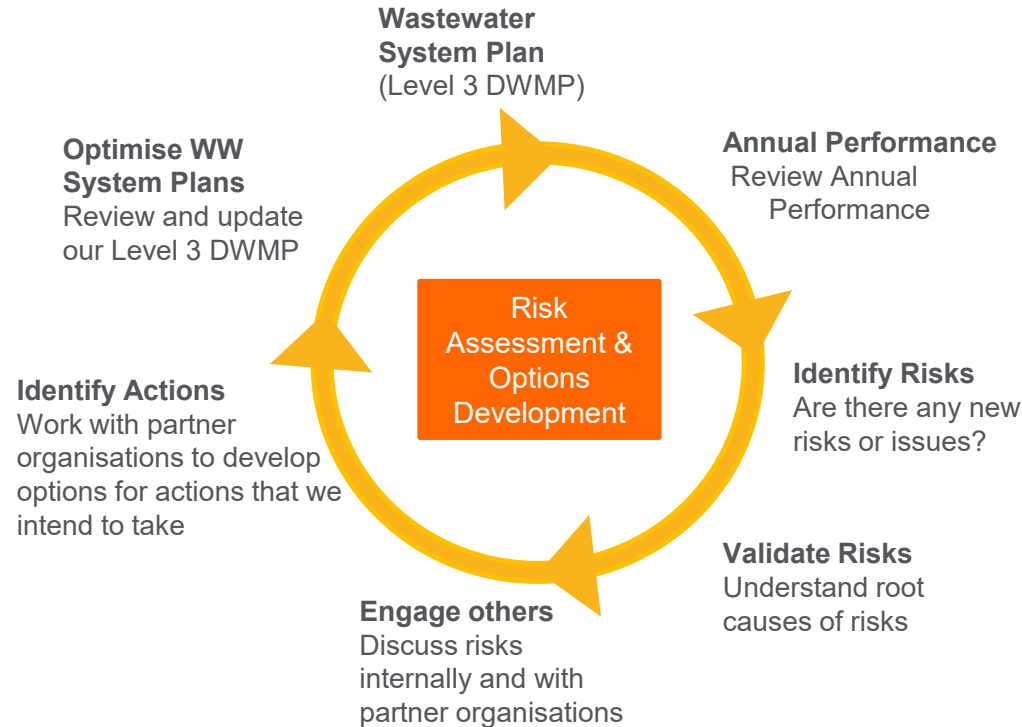
<b>Flooding</b> (a) Internal (b) External (curtilage) (c) Surface Water	<b>Overflow performance</b> (a) Storm (b) Emergency	<b>Treatment works compliance</b> (a) Numeric (b) Descriptive (c) DWF (d) FFT	<b>Good Ecological and/or Chemical Status:</b> (a) Public sewerage (b) Urban and transport	<b>Pollution incidents</b> (a) Serious (b) Total	<b>Water Quality</b> (a) Bathing Waters (b) Shellfish Waters	<b>Groundwater</b> (a) Pollution (b) Infiltration	<b>Asset Health</b> (a) Sewer blockage (b) Sewer collapse (c) Non-Infra assets
							<b>+ Bioresources (Sludge)</b>

# The process for developing a DWMP is set out in the national guidance

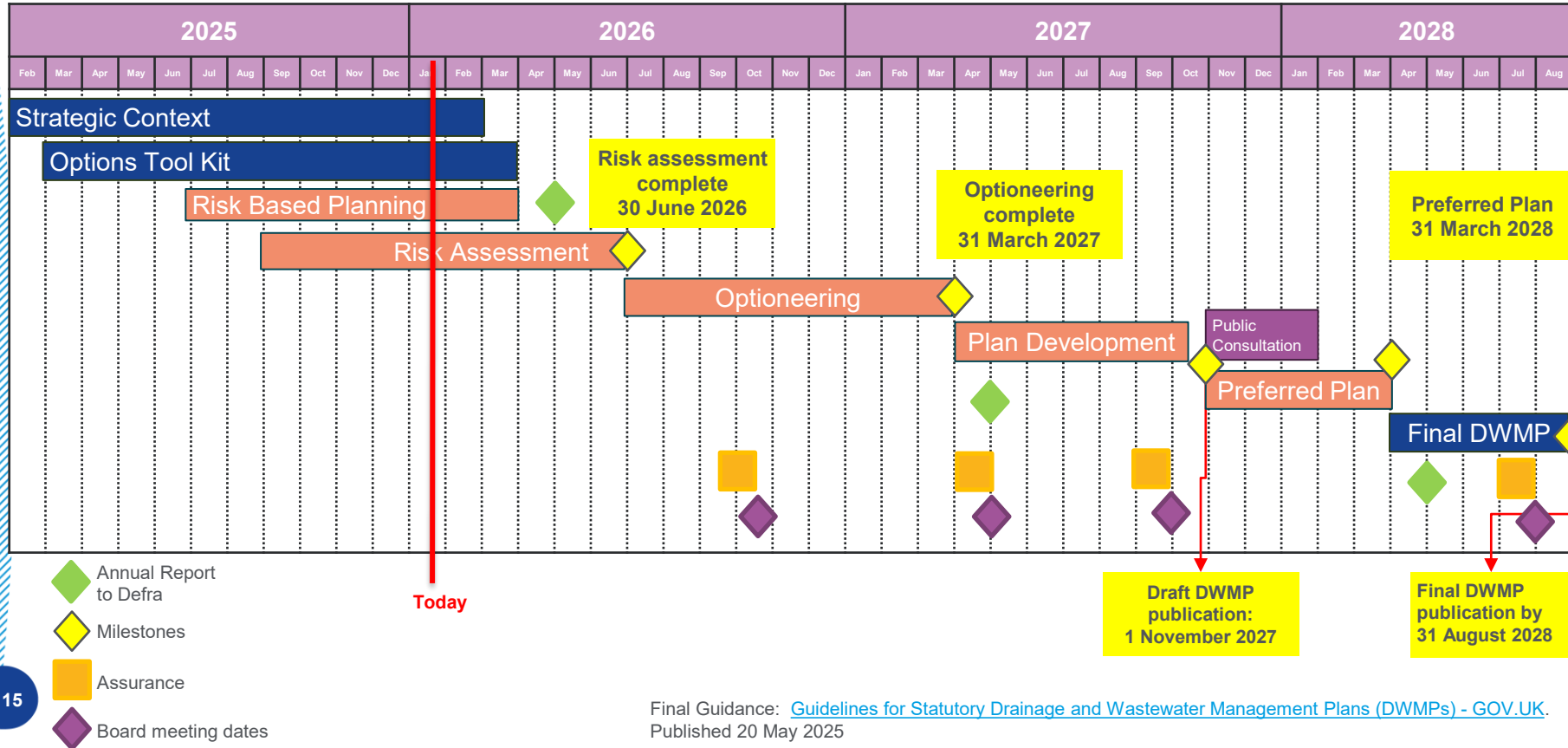


- Blue process steps show activities completed at the regional level
- Orange process steps are the planning tasks for each wastewater system
- Three levels of planning:
  - Level 1 – Company wide
  - Level 2 – River Basin Management catchments
  - Level 3 – wastewater system / sewerage catchment
- Collaboration expected with stakeholders throughout to co-create the plan
- Risk-based, data and evidence driven, spatial plan
- Our DWMP is published on our website and kept up to date

# The DWMP needs to be reviewed annually and kept up to date



# Our Programme to deliver the DWMP



# Working with others to co-create our DWMP



from  
Southern  
Water 

# DWMP Guidance: Requirements for Stakeholder Engagement



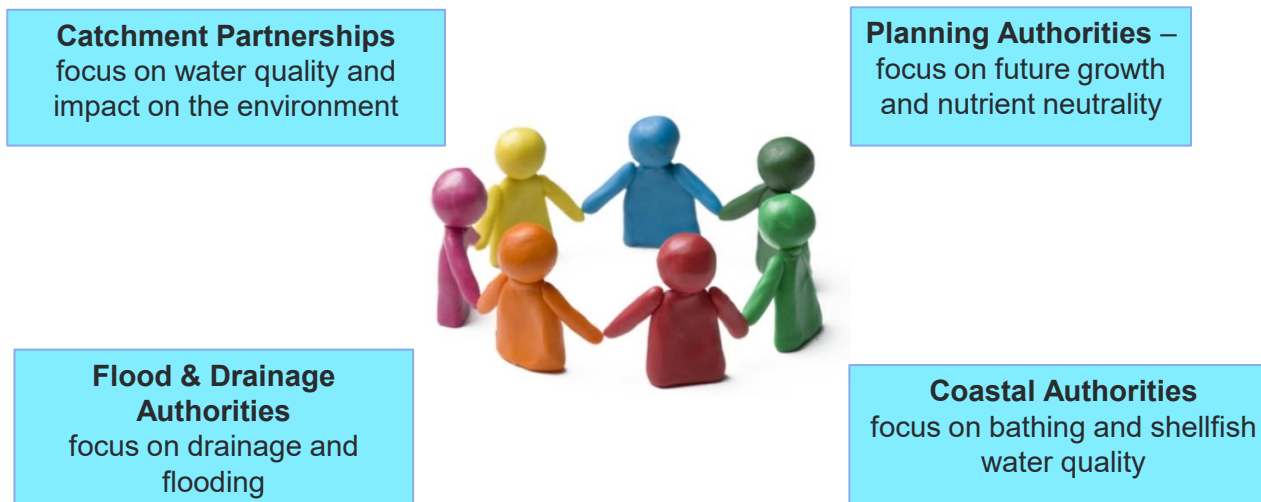
*“You should ...*

- ***Work with other stakeholders** (such as Catchment Partnerships, Internal Drainage Boards, Planning Authorities and Lead Local Flood Authorities) **to identify and deliver multi-beneficial solutions** with individual or joint action and investment*
- *Create a working framework that ensures you and your stakeholder organisations can **collaborate with each other** and with communities to ensure that, where practicable, your DWMP aligns with, and supports, other plans and policies related to drainage, flood risk management and waterborne pollutant systems and pathways”.*

# Working together in partnership with other organisations is core to co-creating the DWMP

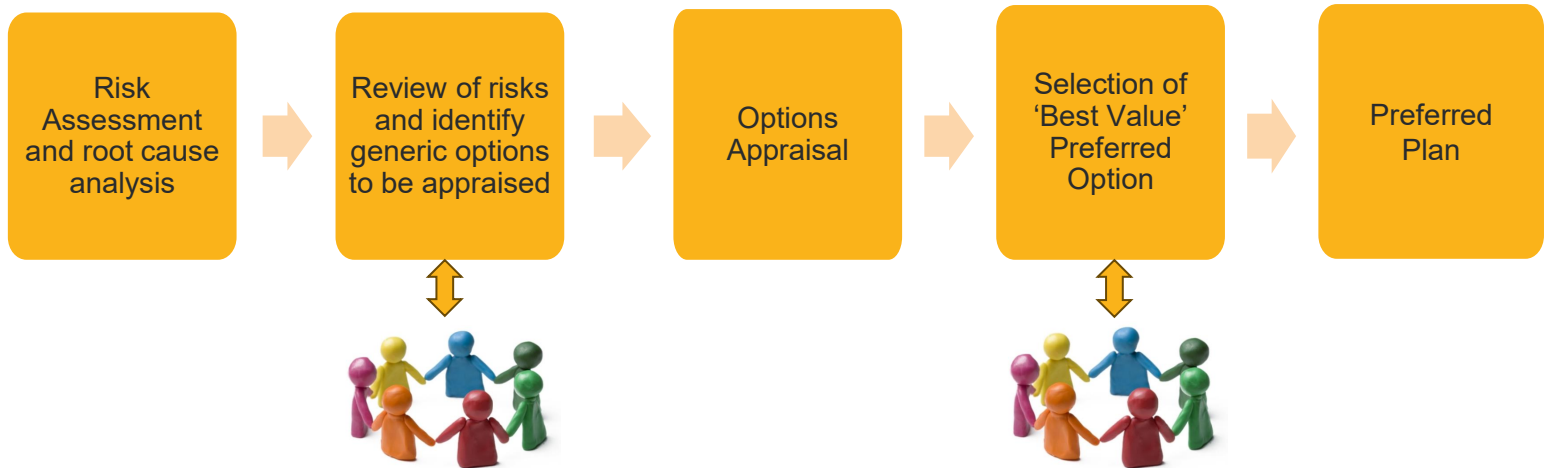


Some of this will be through existing groups and relationships to share data and information on future investment needs and opportunities



Our Independent Climate and Environment Group (ICEG) will oversee and advise on our DWMP through a sub-group (known as Regional Advisory Panel), and ensure we have the right level of stakeholder engagement throughout the development of our plan

**Options Development:** Working with external organisations to identify opportunities for partnership working and greener, nature-based and sustainable options that deliver wider multiple outcomes



Some of this will be through virtual workshops, a new GIS portal or specific events to make it easy for everyone to get involved and input into the process

# Have your say .....

Questions:

1. Would you like to be involved in co-creating our DWMP?
2. What would you most like to get involved in?

# Summary



from  
Southern  
Water 

# The DWMP is now a statutory plan to set out the actions we intend to take to improve the performance of our wastewater systems



The DWMP is the planning framework for wastewater asset management and planning

## Our DWMP will:

- Provide a clear understanding of current performance and future demands and pressures
- Create opportunities to work with partner organisations to co-create our investment plan
- Set out the actions we intend to take to improve our services for customers and protect the environment
- Provide the evidence base for our Business Plans and the Price Review process
- Be published by 31 August 2028 to provide the evidence for our business plan for AMP9



# Drainage and Wastewater Management Plan 2028 (DWMP28)

January 2026

[DWMP@southernwater.co.uk](mailto:DWMP@southernwater.co.uk)

from  
**Southern  
Water.** 

The Southern Water logo graphic consists of three stylized, wavy lines in shades of blue, representing water.