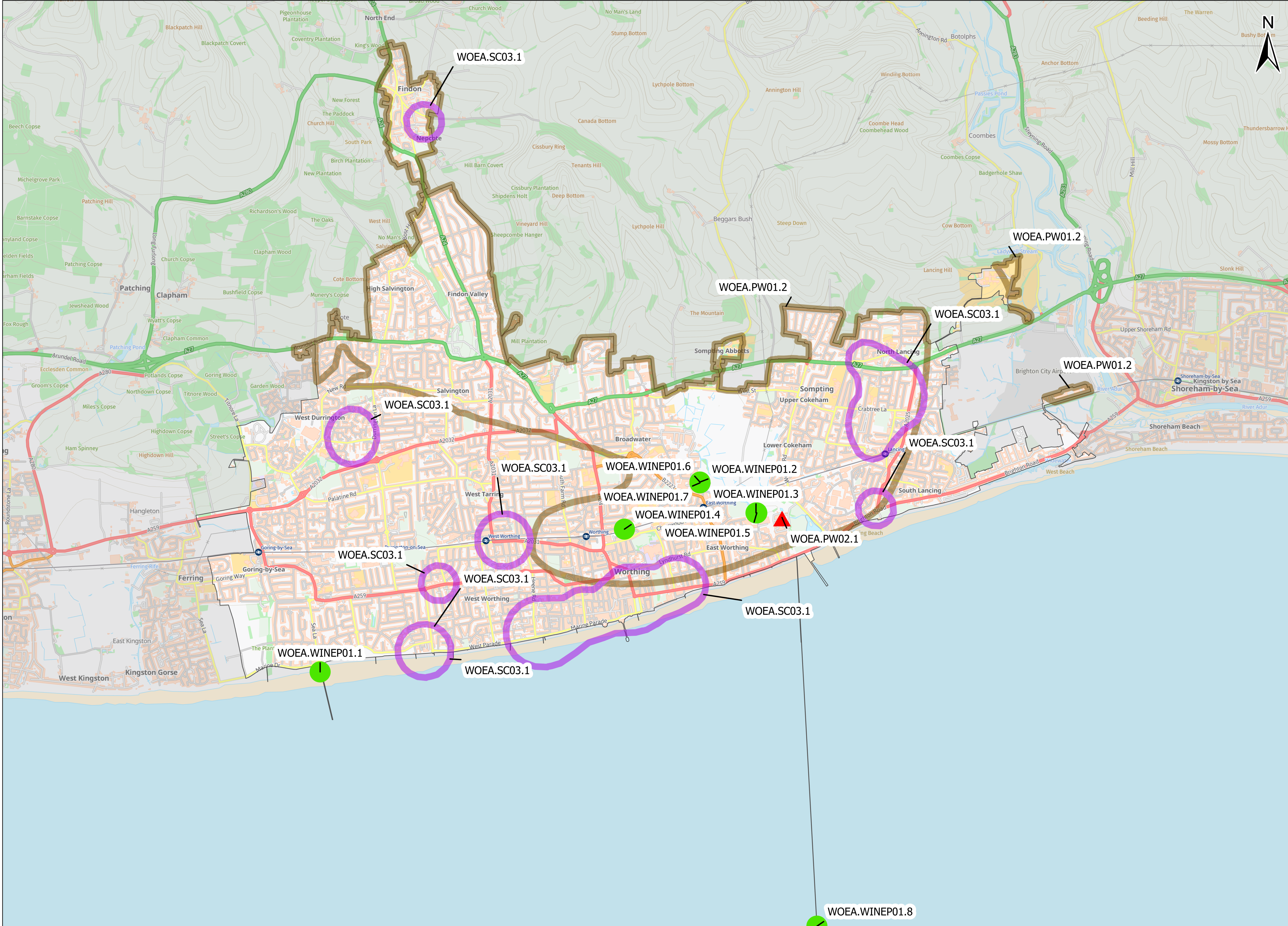
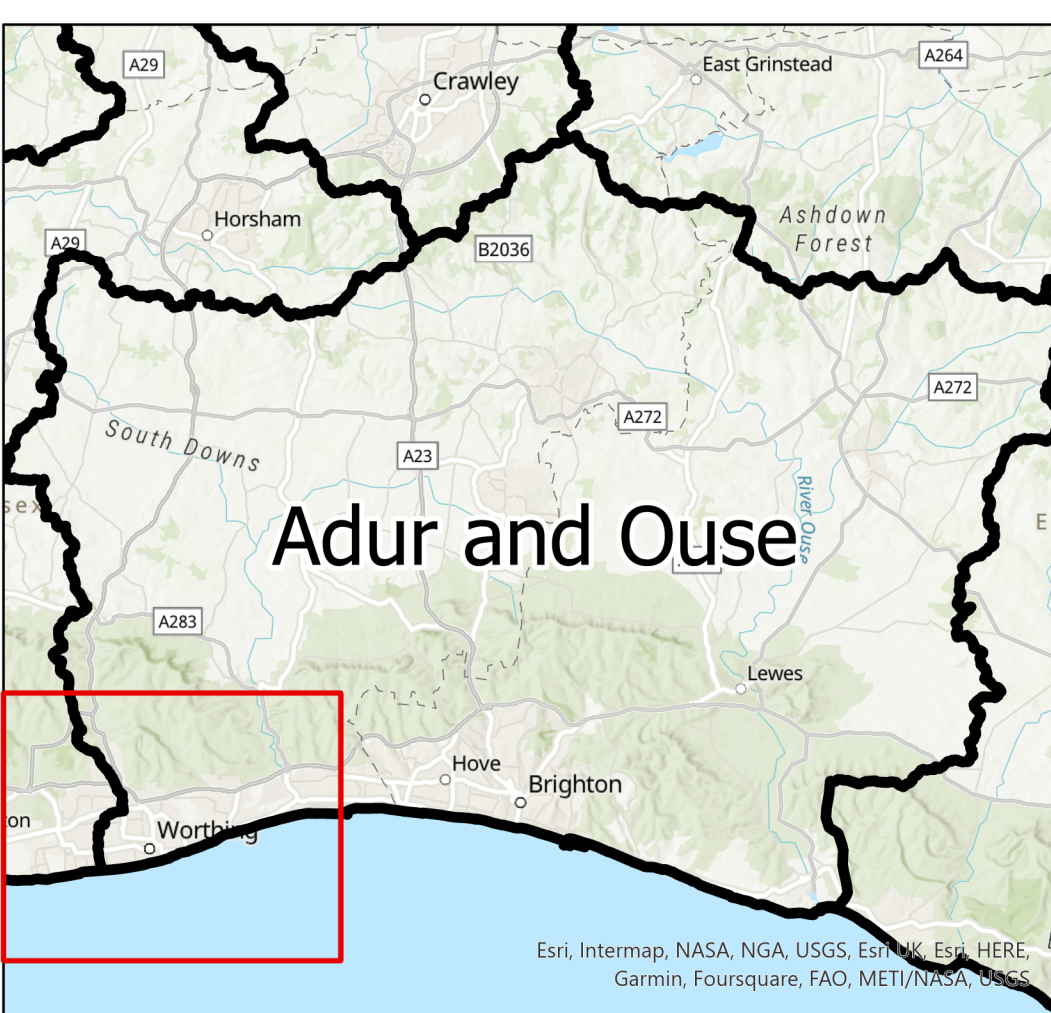








Drainage and Wastewater Management Plan: Location of Potential Options EAST WORTHING

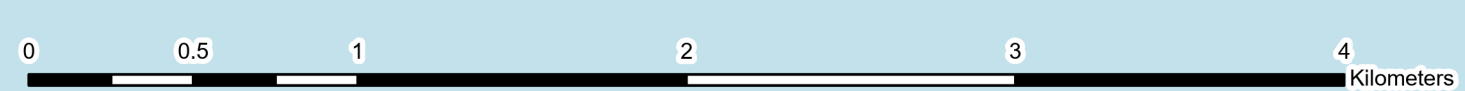
Wastewater system in Adur and Ouse River Basin Catchment



(i) This map should be read in conjunction with the list of Investment Needs for this wastewater system
 (ii) The areas shown on this map are the potential locations for the options. The location of the risk may be elsewhere in the system.
 (iii) Labels for each location are the option references in the list of Investment Needs
 (iv) Drainage Area Plan (DAP) options on flooding and growth are not shown.



-  Customer Education
-  Pipe Rehabilitation
-  Asset Resilience
-  Wastewater Treatment
-  WINEP Nutrient Neutrality
-  WINEP Storm Overflows



Based upon the Ordnance Survey by permission of Ordnance Survey on behalf of the Controller of Her Majesty's Stationary Office. Crown copyright Southern Water Services Limited 100019426