

Help Joss stop the
unflushables!

Find out more about
our educational
resources for schools





Southern Water serves 4.7 million customers

in more than two million homes and
businesses across Kent, Sussex,
Hampshire and the Isle of Wight.



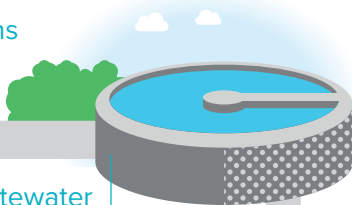
We look after 39,973km of sewers

That's enough pipe to wrap
around planet earth.



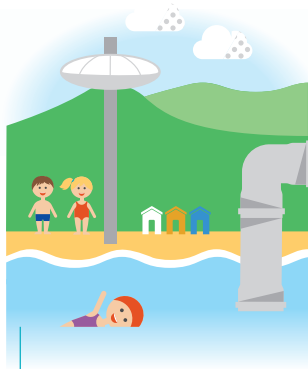
We have 3,499 pumping stations

Moving wastewater around our network
ready for treatment.



We have 363 Wastewater Treatment works

Working Twenty-four hours a day
7 days a week.



Every day, we receive a massive 1,248 million litres of wastewater

Imagine that! It's like filling up
almost 500 Olympic-sized
swimming pools. But don't worry,
we make sure to clean it all up
and send it back to nature safely.

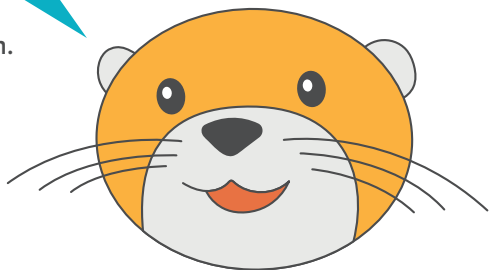
At Southern Water, we do our best to safely
treat all of the wastewater flushed down the
toilet and washed down the drains.

You can help by only flushing the 3 Ps – toilet paper, pee and poo.

Unflushables like wet-wipes that claim to be
flushable and cotton buds block pipes,
causing pollution and flooding that may
harm the environment.

Top tips to keep sewers flowing

Joss lives by the sea and wants it to stay clean. If you and your family follow these simple tips you can stop the unflushables blocking your drains, flooding your home and harming the environment where Joss lives.

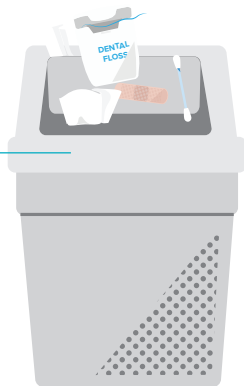


Remember the 3 Ps

Only the 3 Ps should go down the toilet – paper, pee and poo.

Bin it, don't flush it

Wipes, cotton buds, dental floss, plasters and period products should all go in the bin, even flushable wipes.



Scrape your plates

Scrape all leftover food into the bin rather than washing it down the drain.

Doing the right thing helps the environment

Following the tips above helps keep our beaches beautiful and prevent serious environmental pollution, which can affect streams, rivers and wildlife.



Unflushables codebreaker

Using the key, can you help Joss crack the code to uncover the blockage-busting message?



Code:

↕↔↙↗

▲▶◀

◀↑↘

◀↑△↘↘

■

■

■

■

■

■

■

■

■

■

■

■

■

■

■

▲▼

↖↕▶↔

◀↑↘

◀↕↓↙↘◀

■

■

■

■

■

■

■

■

■

■

■

■

■

■

■

Key:

A	B	C	D	E	F	G	H	I	J	K	L	M
⇒	⇐	↗	↖	⇒	←	→	↑	↓	↖	↗	↙	↘
N	O	P	Q	R	S	T	U	V	W	X	Y	Z
↔	↕	▲	▼	△	▽	◀	▶	◁	▷	◼	◻	◻

Bin-it or flush-it challenge

Choose the right pipe to dispose of each item.
Don't block your drains and cause a flood by plugging up your pipes.



Toilet paper



Wet wipes



Poo



Nappies and
period products



Newspaper



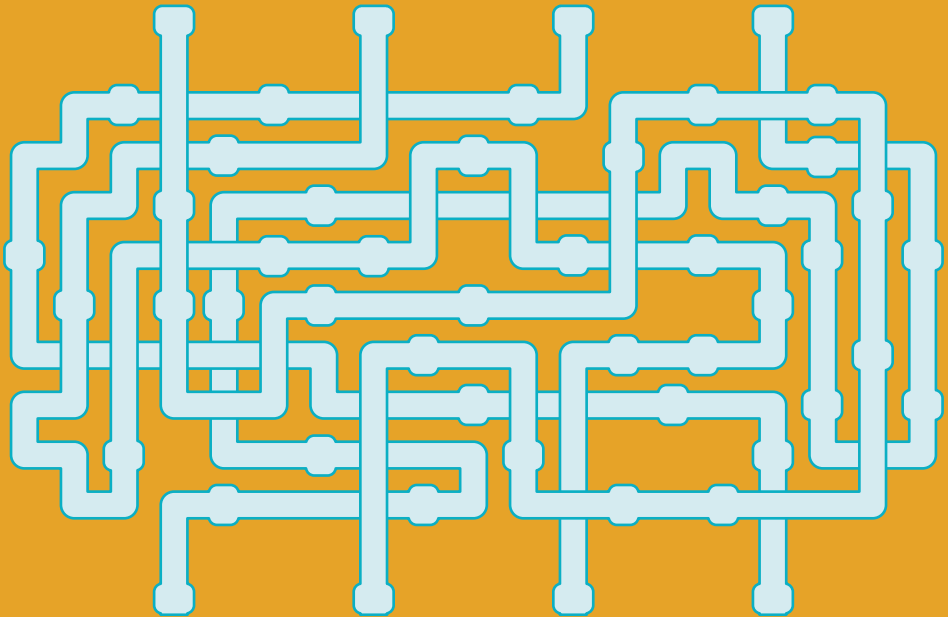
Apple core

A

B

C

D



Recycle it



Flush it



Bin it



Compost it

Stuck? You can find the solution on our website – southernwater.co.uk/puzzle-book-solutions

To play our game

- Carefully tear along the perforations to remove the square opposite.
- Place the paper face down and fold the four corners in so that they meet in the middle.
- Turn paper over and repeat.
- Fold in half top to bottom, crease then unfold.
- Repeat left to right.
- Turn over and insert thumbs and forefingers into the corners. Pinch four corners together to make the points meet in the middle.

How to play

- Find a friend.
- Ask them to choose a character.
- Open and shut the puzzle once for each letter in the chosen character's name (e.g. four for Joss).
- Ask them the true or false question.
- Open the flap to check and share the answer.



True or false:
If a toilet has two flush options, you should press them both at the same time?



False...

The small flush is for pee; the big flush is for poo.

True or false:
You should stick to a short shower?



True...

A shower uses eight litres of water per minute, so keep your shower as short as you can. Aim for four minutes!

True or false:
Most sewers are big enough to walk through?



False...

Sewer pipes are smaller than most people think. Most are only 10cm wide and can easily be blocked.

True...
Wipes, period products, cotton buds and dental floss are all unflushable. They should all go in the bin.

True or false:
Wet wipes are an unflushable?



True or false:
There are only three things that you should flush down the toilet?

Nappies



True...

Only flush the 3 Ps:
paper, pee and poo to
keep your drains
running freely.

True or false:
You should scrape
your plate into the sink?

False...

Even scraps of food
can build up into a
blockage causing
floods. Yuck!
Always scrape
your plate
into the
bin.

True...

A dishwasher uses
14 litres of water and
a washing machine
uses 50 litres
every time.

True or false:
You should ensure
dishwashers and washing
machines are full before starting.

False...
Turn the tap off.
A running tap
wastes six
litres per
minute.

True or false:
You should keep the
tap running while you brush
your teeth or wash up dishes?

Joos



One...

bin for your
unflushables –
wipes, cotton
buds, period
products.



Two...

flushes on a toilet.
Choose the right one!
Small flush for pee;
big flush for poo.

Three...

Ps – only
flush paper,
pee and
poo.



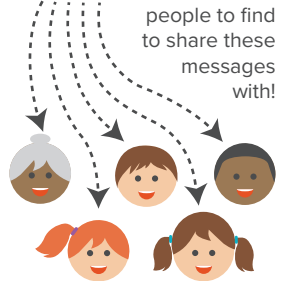
Four...

minutes in the shower.



Five...

people to find
to share these
messages
with!



NEW WAVE



from
Southern
Water.

Water saving spot the difference

Can you spot six ways that the family who live at Savings Drive are saving water compared to their friends at Waterbill Rise?

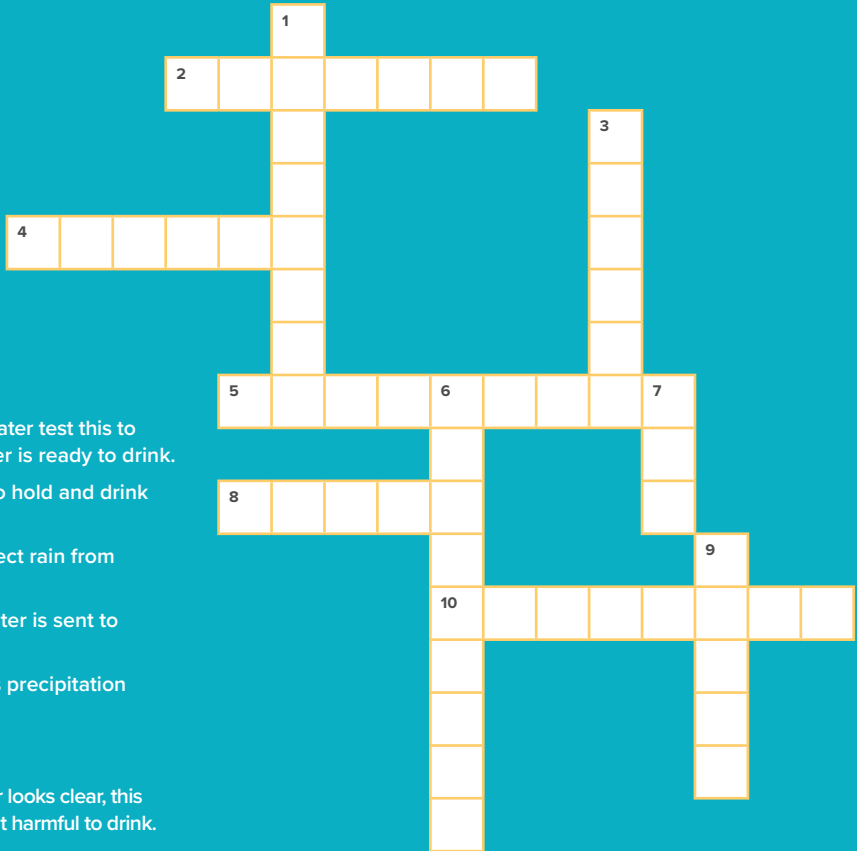


Stuck? You can find the solution on our website – southernwater.co.uk/puzzle-book-solutions

Crossword puzzle



Can you help Peasmarsh complete this puzzle?



Across

2. Southern Water test this to ensure water is ready to drink.
4. Container to hold and drink water from.
5. How to collect rain from your roof.
6. How the water is sent to your home.
10. How Earth's precipitation happens.

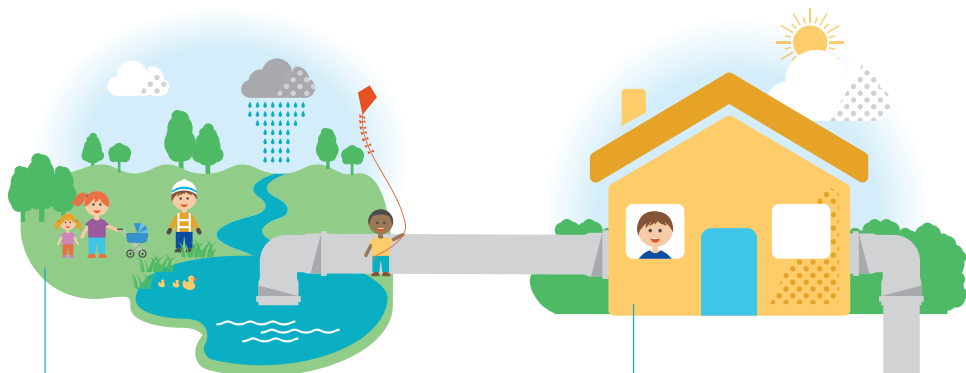
Down

1. Even if water looks clear, this could make it harmful to drink.
3. What bathroom item uses the most water in your home.
6. Water is often seen and stored here.
7. You turn this on to get fresh water.
9. Liquid that is a precious resource.

Use from these words if you need some help:

Water	Cup	Drain	Condense	Bath
Guttering	Bottle	Flush	Waterbutt	Quality
Flood	Bacteria	Rainfall	Toilet	Shower
Reservoir	Snow	Tap	Pipes	Tank

Stuck? You can find the solution on our website – southernwater.co.uk/puzzle-book-solutions



Where does it all come from?

Southern Water takes water from local rivers, reservoirs and underground aquifers and then treats it to make it ready to drink.

2.6 million

The number of people we supply with drinking water.

Why do we need to save water?

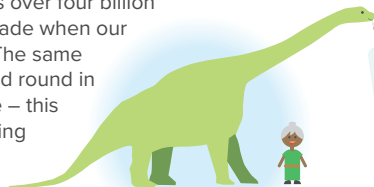
Water is vital for life

You might last a few weeks without food, but only three days without water.



There is no new water

The water on Earth is over four billion years old and was made when our planet was formed. The same water goes round and round in a never-ending cycle – this means you are drinking the same water that dinosaurs drank.



We live in a changing world

The UK Government has predicted in 25 years from now we'll have lost a third of our water sources through climate change and our population will have grown by 15%.

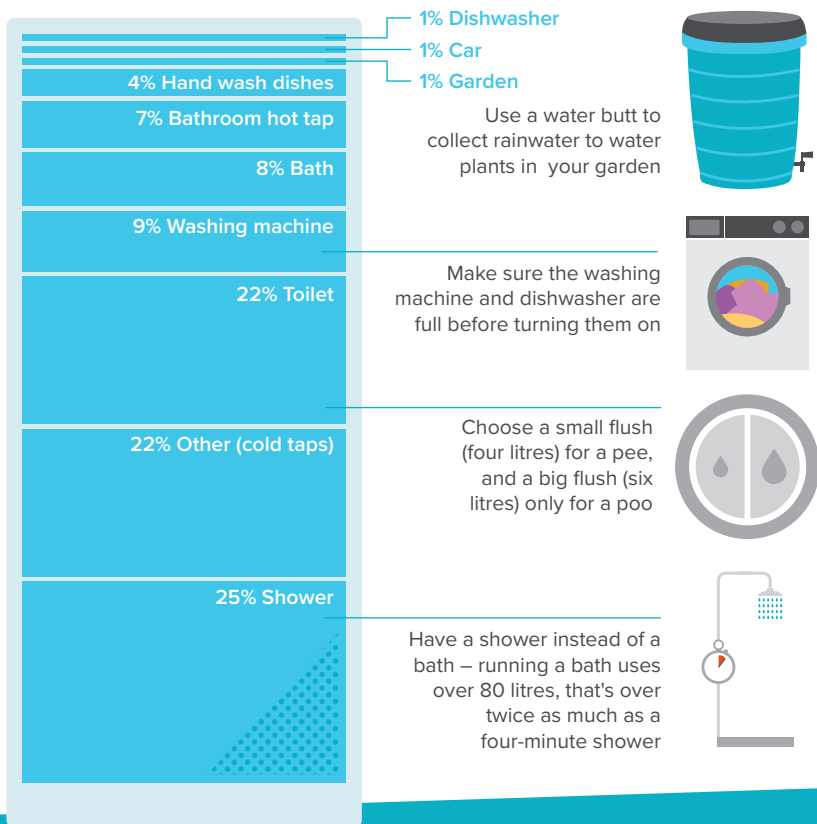


We're also planning to use water recycling technology, which is already used around the world in countries like Australia and the USA. We'll take some of the final treated wastewater and use advanced treatment techniques to turn it into purified recycled water. This can then be used to top up existing water sources like rivers and reservoirs. Water recycling will reduce the amount of water we take from the environment and protect precious habitats that are home to wildlife like Joss and Peasmarsh.

How do we save water?



Peasmarsh lives beside the river where some of our water comes from. To make sure it's still a nice home for a water vole, Peasmarsh wants everyone to save water. On average, every person in our region uses 127 litres of water each day. Our target is to encourage everyone to hit a target of 100 litres of water per day. The glass below shows how all that water is used and some top tips on how to save it.



Be a water protector!

Not wasting water will help protect your local river by reducing how much water we have to take from it. As the number of people living in our area grows, we want to take less water from our rivers while making sure there's always enough for everyone to share.



Become a

water protector

with Peasmarsh

Find out more about
our educational
resources for schools



NEW WAVE



from
Southern
Water.